

WHO ARE WE AND WHAT DO WE DO?

KIU provides Swahili language training, cultural training, translation / interpretation services and educational material to help people get the most out of their stay in the land of a thousand **Karibu!** (welcome)

WHO DO WE WORK WITH?

Everyone! We work with people from a wide range of backgrounds – from tourists to NGOs and from employees of foreign companies, Embassies, International organizations to Missionaries and students.

WHAT LANGUAGE COURSES DO WE OFFER?

We offer structured groups courses on 3 mains levels as well as individualized training 100% tailored to your needs.

1. *Beginners Course:* 2. *Intermediate Course:* 3. *Advanced Course:*

WHERE, WHEN AND HOW MUCH ARE THE CLASSES?

Note: All prices quoted in US dollars (can be converted in Tanzanian shillings as per existing exchange rate) and includes cultural lessons as well as field trips to put your Swahili into action!

1. Online Courses:

Group Courses: Starts every Monday from 10.00am to 12.00pm and 23.00 to 01.00[EAT] for 2 to 14 wks, Monday to Friday. Fee is usd 100 per week

Customized courses: Students can choose lessons time from one to four hours a day between 06:00 to 22:00 (EAT), From Monday to Sunday. Fee is usd 15 per hour



www.swahilicourses.co.tz

2. Group Courses

Choose to learn with others in the class, from two wks to one year and if your schedule is tight you can join Lunch time, Evining or Weekend courses. We employ the ‘communicative approach’ which encourages learners to participate in the class by working in pairs and groups. “We adhere to all COVID 19 health hygiene advice”



Dar Es Salaam. Iringa. Arusha and Zanzibar		
COURSE NAME	TIME	FEE IN USD
One Year	36 wks 4 hrs a day, 5 days a wk.	\$ 4,950
6 Months	24 wks, 4 hrs a day, 5 days a week.	\$ 3,360
3 Month Course	12 wks 4 hrs a day, 5 days a wk.	\$1,920
Super intensive Course:	6 wks. 8.30am to 13.30pm Mon to Fri. From Beginner to Advance.	\$ 1,195.
4 Wks Course:	8.30am to 12.30pm, Mon to Fri.	\$ 600
3 Wks Course:	8.30am to 12.30pm, Mon to Fri	\$ 450
2 Wks Course:	8.30am to 12.30pm, Mon to Fri	\$ 300
Weekend Course:	8wks Sat & Sun. 9.00am to 11.00am,	\$ 300
Evening Course:	8 wks 4.00pm to 5.30pm & 5.30pm to 7.00pm. Mon, Wed & Fri,	\$ 280
Lunch Time Course:	12 wks 12.30pm to 1.30pm. Tue & Th.	\$ 200
Habari za Asubuhi Course:	12 wks 7:30am to 8:30am Wed.	\$ 200

www.swahilicourses.co.tz

DAR ES SALAAM

Msasani Tower

(Off Kimweri Avenue opposite to CCBRT)



Russian Cultural Centre:

(Sea View Road near to Agakhan Hospital
Only 5.30pm to 7.00pm. Mon, Wed & Fri, for 8 wks.
Fee is usd \$ 290



ZANZIBAR

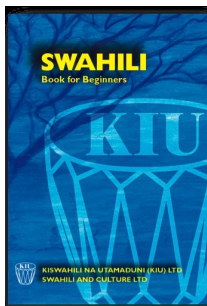
Stone Town:



www.swahilicourses.co.tz

WHAT EDUCATIONAL MATERIALS DO WE PROVIDE?

We produce Beginners and Intermediates Swahili books (\$20 each), 30 beginners lessons in audio CD/Flash plus booklet (\$50) and 23 Intermediates lessons CD/Flash plus booklet (\$50) which are available to purchase at any of our centres or Bookstores in Dar es Salaam, Arusha, Iringa and Zanzibar. "The Swahili book for Beginners and the audio set are also available on line at <www.amazon.co.uk/swahilibook for beginners>



WHAT CULTURAL COURSES DO WE RUN?

In addition to the below, we often run bespoke courses that combine language and culture.

Orientation Sessions

These are usually 1 day, tailored to each client and cover key political, economic, social, legal, environmental and cultural issues in Tanzania.

Introduction to Tanzania

The course includes a country briefing, survival Swahili, culture lessons, participation in local games, a host family stay and outings to local restaurants, markets, performances and places of historical interest.

WHAT TRANSLATION/INTERPRETATION SERVICES DO WE PROVIDE?

We provide reliable and high quality Swahili to English and English to Swahili translation and interpretation services. Please call or email us to find out more and discuss your needs.

WHAT DISCOUNTS ARE AVAILABLE?

We offer group discounts for enrolling 5+ people and have favourable rates for volunteers, missionaries, students doing research etc. We also offer discount to students booking two or more courses at the same time.

WHAT IS THE REFUND POLICY?

We're confident that all our students will love our courses but do offer the guarantee of your money back should you not be satisfied after two days of the course.

HOW CAN STUDENTS BOOK A COURSE OR FIND OUT MORE?

If you're interested in a course or simply want to find out more about us. . .

Head Office Dar es Salaam:

Msasani Tower

E: : info@swahilicourses.co.tz

T: +255 739 921510/+255 754 271263 /+255 713 440045

Iringa Office:

E: : iringa@swahilicourses.co.tz

T: +255 756 542266 /+255 754 271263

Arusha (KIU Representative):

E: : arusha@swahilicourses.co.tz

T: +255 715 848787 /+255 752503366 /+255 754 271263

Zanzibar Office:

E: zanzibar@swahilicourses.co.tz

T: +255 777 818581 /+255 754 271263

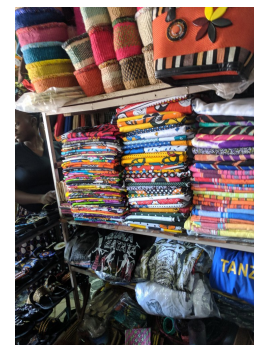
We ask for a 60% deposit to confirm a place in a course.

Payment can be made Online, by Cheque, bank transfer to our account, by Pay pal or Cash to any of the following centres:

- Msasani Tower
- Arusha Centre
- Iringa Centre
- Zanzibar Centre
- United Kingdom

IRINGA

Neema Craft (Bendera st)



3. Individual / Tailor Made Courses

We can arrange courses to suit all needs and objectives, and offer the lessons at a time, day and location convenient for students.

1 student - \$ 15 per hour

2 students - \$ 12 per hour per person

3 students - \$ 9 per hour per person

4 students - \$ 8 per hour per person

5 students - \$ 7 per hour per person

Note: courses conducted outside our teaching Centres will incur teachers' travelling costs which we will confirm in advance.

