

📍 Hokkaido

Takesato Bldg. 2F, Kita2, Nishi3, 1-29, Chuo-ku, Sapporo, Hokkaido, 060-0002

Phone: +81-11-222-7710

Email : hokkaido@japanese-languageschool.com

Home Page : japanese-languageschool.com/hokkaido/

📍 Nagoya

Nadya Park B1F, 3-18-1, Sakae, Naka-ku, Nagoya, Aichi, 460-0008

Phone: +81-52-253-6150

Email : nagoya@japanese-languageschool.com

Home Page : japanese-languageschool.com/nagoya/

📍 Kyoto

Kyoto Fukutoku Bldg. 2F, Tearaimizuchō 670, Nakagyo-ku, Kyoto, Kyoto 604-8152

Phone: +81-75-253-6001

Email : kyoto@japanese-languageschool.com

Home Page : japanese-languageschool.com/kyoto/

📍 Fukuoka

Amu Plaza Hakata B1F, Chuogai 1-1, Hakata station, Hakata-ku, Fukuoka, Fukuoka 812-0012

Phone: +81-92-402-0646

Email : fukuoka@japanese-languageschool.com

Home Page : japanese-languageschool.com/fukuoka/



[jals.group](https://www.facebook.com/jals.group)



[jals.group](https://www.instagram.com/jals.group)



JaLS GROUP

Hokkaido

Nagoya

Kyoto

Fukuoka

PROSPECTUS





CONTENTS

03

Why should I choose JaLS GROUP?

09

Campus Locations

11

Courses

17

School Facilities

21

Accommodation

25

Activities

29

Student Support

WELCOME TO JALS GROUP

Message from the Principal

A warm and family-like school

JaLS is a Japanese language school specializing in short-term study abroad with school locations in Hokkaido, Nagoya, Kyoto and Fukuoka.

We have won numerous awards since our establishment in 2012, combining professional Japanese tuition and our ethos that each student should have the most valuable experience possible while studying in Japan. We use intensive and practical language study alongside a variety of activities and cultural experiences to welcome and support all our students in a warm and family-like atmosphere.

It is our desire that all students would feel at home in Japan, be able to return to study in the future and have a wonderful and deep experience of Japanese culture.

01

Why should I choose JaLS GROUP

6 Features of JaLS GROUP

Flexibility

3

Our school is committed to keeping courses and class sizes small, intimate, and flexible. You can study at JaLS for a minimum of 1 week, and we offer rolling programs, from beginner to advanced

Japanese, every Monday. Classes are a maximum of 8 students, and an average of 5, which means that every student here receives detailed personal attention and care.

Activity

4

A unique part of our school personality is the active Cultural Lesson and Activities schedule that is offered throughout the year. In every season you can refine your Japanese skills through learning about unique aspects of Japanese culture, and enjoy the stunning environment that Japan has to offer. We also want to make sure you have the most fun possible whilst you are with us!

Facility

5

All of our schools are located in the heart of the city. We are surrounded by restaurants, shops, and tourist attractions. Our facility is also state of the art, including a large café, bookshop, and study centre, open, until 10pm each day, where you can make the most of your study-time in Japan.

Community

6

In addition to our Japanese school, our wider company also runs an English and Asian Languages school for local Japanese people from the same facility. This means that alongside your daily Japanese classes, there are also many opportunities to make Japanese friends and practice your language each day in informal ways. Our school also has a committed Student Support Team who are committed to responding to your needs and helping every part of your trip run smoothly before, during and after your stay.

Quality

1

At JaLS we pride ourselves in being Japanese Language specialists. Our curriculum is uniquely designed to offer the maximum benefit to short-term learners, all of our teachers hold a professional Japanese teaching license, and we are continually recognized as one of the top language schools in the world by our professional partners.

Family

2

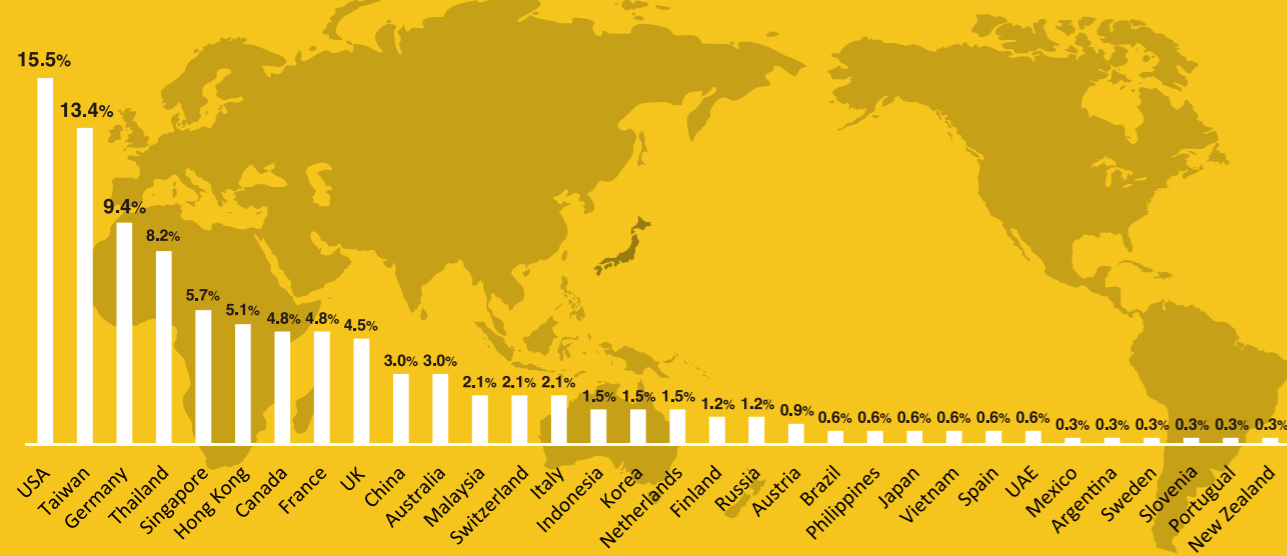
JaLS is a warm, welcoming, second home for our global community of students. Every year, we welcome students from over 40 different countries, and every year, many students return to our school to reconnect with us and continue their studies. This is a place where you are truly welcome and where you can study in a supportive environment.

Classmates

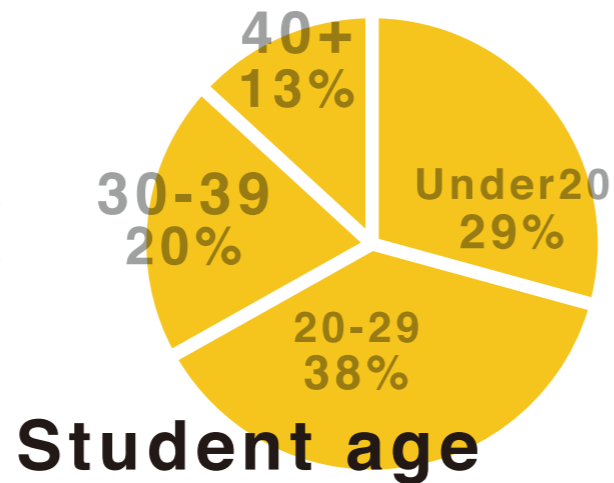
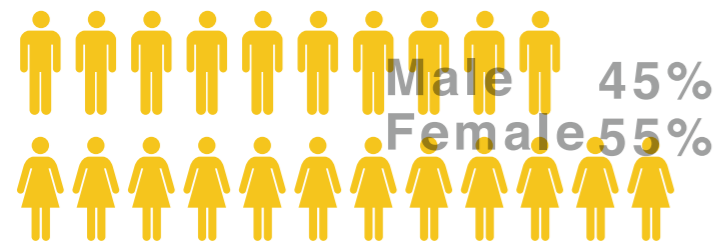
Make friends from across the world

JaLS attracts students from all over the world. Annually, students from over 40 countries join us, with a mixture of ages and backgrounds also represented. Here, students can make lifelong friends and be a part of a strong, vibrant, international community.

Student countries



Student gender



Student age

Student Voice

There are no words to express how grateful I am for having time with this amazing group of people. This was the best experience of my life and you made it happen. I finally know where I want to go in my life and it's all thanks to the big family that JaLS is. Thank you from the bottom of my heart.

(Catherine, Canada)

Student Support

As our school is small, we have a strong support network for students and staff who are ready to provide guidance and help wherever it is needed. If students have any problems with their studies, or in their wider daily life, our team are here to listen and help.

Teachers

Helping students create the best memories and experiences!



Our teachers

All of the teachers at JaLS possess their professional teaching license and go through a detailed interview, selection, and training process before joining our team. We specifically recruit teachers with a passion for Japanese language education and a warm approach to teaching. Students can feel confident and supported in improving their Japanese abilities through their time at the school.



Local Friends

Make a lot of Japanese friends

At every JaLS campus, hundreds of Japanese people study English and a variety of other languages, so you'll have lots of chances to make friends.

Student Voice

I had a lot of fun because there are Japanese people on the same campus, so I could talk with many Japanese people!
Not only did I get to exchange languages, but I also made a lot of friends!

(Helen, Germany)

POINT 01

Study with over 300 Japanese people who study English and a variety of other language at the same campus.

POINT 02

Participate in community events to meet Japanese people.

POINT 03

Hang out with local friends after class.



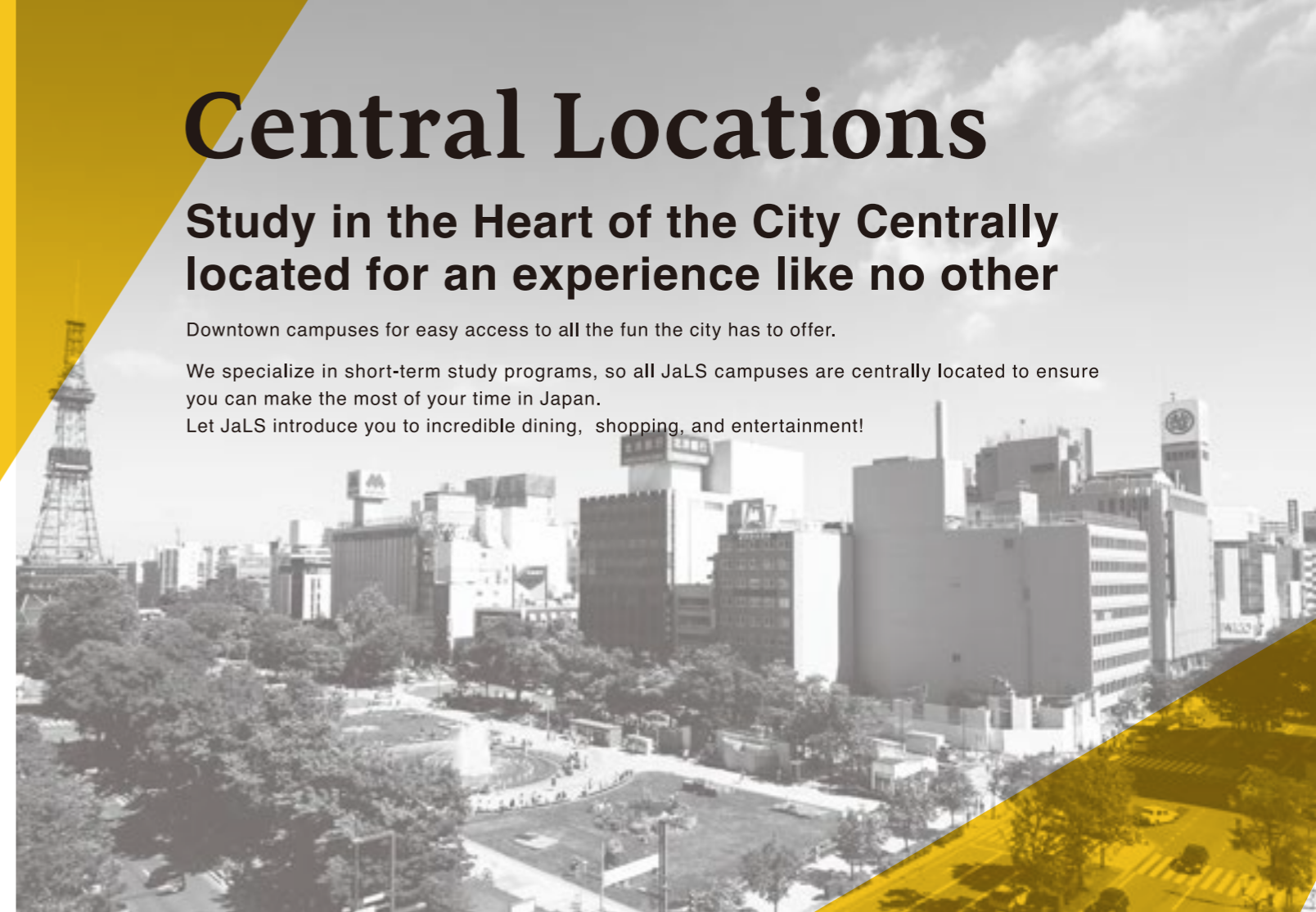
Central Locations

Study in the Heart of the City Centrally located for an experience like no other

Downtown campuses for easy access to all the fun the city has to offer.

We specialize in short-term study programs, so all JaLS campuses are centrally located to ensure you can make the most of your time in Japan.

Let JaLS introduce you to incredible dining, shopping, and entertainment!



Awards & Accreditations

Globally recognized for educational excellence

Since first opening our doors in 2012, the JaLS Group has been recognized and awarded by accredited academic organizations around the world for setting ever higher standards of educational excellence in service to our students.

We have been consistently winning numerous awards since 2015!



Campus Locations

Sapporo, Nagoya, Kyoto, Fukuoka...
in the same Japan, but with different cultures.

An island nation extending from north to south, Japan has diverse cultures. At JaLS GROUP, you can learn about Japan while enjoying the various regions and cultures from north to south.

SAPPORO

Japan's northernmost major city, with the fourth-largest population. A metropolitan hub surrounded by scenic beauty that changes throughout four distinct seasons, Sapporo also boasts some of the most delicious food in the country. Cooler than most of Japan in the summer, with winter sports right around the corner in the colder months—even the people of Japan consider it one of the best places to live.



KYOTO

Kyoto has been the capital of Japan for more than 1,000 years since 794 and has thrived as the center of Japan throughout its history. Shrines, temples, historic sites, and elegant culture still remain deeply intact, making Kyoto attract people not only from Japan but also from all over the world.



FUKUOKA

Located in the north of Kyushu, it is the fifth most populous city. It is also the gateway to Kyushu and Asia. The accessibility from the center to the airport is the best in Japan, but the city also offers nature, food, activities, and many attractions in such a compact city.



NAGOYA

Nagoya, located in the heart of Japan. Once the epicenter during the Warring States period, it is now a leading hub of craftsmanship in Japan. Embark on a study abroad journey to this unique area, where distinctive culinary culture and Japanese craftsmanship are deeply rooted.



SAPPORO

Key info

Language level: Any
Min. age: 14
Max. class size: 8
Avg. class size: 4.9
Campus capacity: 86
No. of classrooms: 18
Nationalities: 40+
Program duration: 1-12 week



NAGOYA

Key info

Language level: Any
Min. age: 18
Max. class size: 8
Avg. class size: 4.1
Campus capacity: 48
No. of classrooms: 10
Nationalities: 40+
Program duration: 1-12 week



KYOTO

Key info

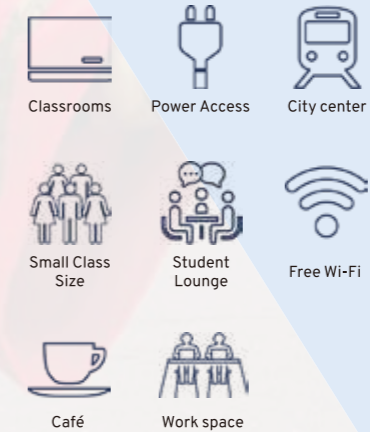
Language level: Any
Min. age: 18
Max. class size: 8
Avg. class size: 5.8
Campus capacity: 88
No. of classrooms: 17
Nationalities: 40+
Program duration: 1-12 week



FUKUOKA

Key info

Language level: Any
Min. age: 30
Max. class size: 8
Avg. class size: 4.3
Campus capacity: 56
No. of classrooms: 12
Nationalities: 40+
Program duration: 1-12 week



Courses

Small class sizes and flexible programs to suit every student.

Standard Course

Group Lessons + Optional Activities

Students take 15 hours of small group classes in one week.

Classes have a maximum of 8 students, and the small size and friendly atmosphere helps students to progress quickly in skill and confidence.

An example week in the Standard Course

	Mon.	Tue.	Wed.	Thu.	Fri.	Sat.	Sun.
9:30-10:20	Japanese	Japanese	Japanese	Japanese	Japanese	Activity	
10:30-11:20	Japanese	Japanese	Japanese	Japanese	Japanese		
11:30-12:20	Japanese	Japanese	Japanese	Japanese	Japanese		
12:30-13:20	Lunch						
13:30-14:20		Activity		Activity			
14:30-15:20							
Night			Activity		Activity		

* Participating in after school activities or day trips is optional.

* Some activities will cost an additional fee.

Standard + Private lessons

Group Lessons + Private Lessons + Optional Activities

Students take 15 hours of small group classes, and an additional 6 hours of 1-1 private lessons each week.

This is an intensive way to study Japanese for students wishing to work towards a specific goal or focus throughout personal lessons.

An example week in the Standard + Private Lessons Course

	Mon.	Tue.	Wed.	Thu.	Fri.	Sat.	Sun.
9:30-10:20	Japanese	Japanese	Japanese	Japanese	Japanese	Activity	
10:30-11:20	Japanese	Japanese	Japanese	Japanese	Japanese		
11:30-12:20	Japanese	Japanese	Japanese	Japanese	Japanese		
12:30-13:20	Lunch						
13:30-14:20	Private lesson	Activity	Private lesson	Activity	Private lesson		
14:30-15:20	Private lesson		Private lesson	Activity	Private lesson		
Night			Activity		Activity		

* Participating in after school activities or day trips is optional.

* Some activities will cost an additional fee.

At JaLS, we give students lots of opportunities to actually speak Japanese. It is no fun just repeating what the teacher says. We want students to think "How do you say this, in that situation" during class time. No matter if students are studying Japanese for the first time, or if they have already started, our goal is to help everyone get better at using Japanese in a short time.

Student Voice

My favorite feature in JaLS was the private class. I felt that as soon as I started attending to private classes, it really helped out with my studies and I began to have confidence. (Nathan, America)

Standard + Internship Course

Group Lessons + Internship Experience + Optional Activities

Students take 15 hours of group lessons, and have 20 hours of internship experiences in one week. Spaces are limited, and the application process also involves an interview prior to acceptance.

An example week in the Standard + Internship Course.

	Mon.	Tue.	Wed.	Thu.	Fri.	Sat.	Sun.
9:30-10:20	Japanese	Japanese	Japanese	Japanese	Japanese	Activity	
10:30-11:20	Japanese	Japanese	Japanese	Japanese	Japanese		
11:30-12:20	Japanese	Japanese	Japanese	Japanese	Japanese		
12:30-13:20	Lunch						
13:30-14:20	Internship	Internship	Internship	Internship	Internship		
14:30-15:20	Internship	Internship	Internship	Internship	Internship		
15:30-16:20	Internship	Internship	Internship	Internship	Internship		
Night			Activity		Activity		

* Participating in after school activities or day trips is optional.

* Some activities will cost an additional fee.

JLPT Preparation Course

JLPT Preparation Classes + Standard Group Lessons (if selected) + Optional Activities

The JLPT course is preparatory for passing the JLPT N2 or N3.

This course is especially suitable for students coming from countries where kanji is not used as a main writing form. For the 4-week course, students will study kanji, grammar, reading and listening comprehension in specific relation to the JLPT.

Prior to coming to the school, and at the end of the program, level testing is used to show progress and Japanese improvement.

An example week in the JLPT Preparation Course

	Mon.	Tue.	Wed.	Thu.	Fri.	Sat.	Sun.
9:30-10:20	Japanese conversation	Japanese conversation	Japanese conversation	Japanese conversation	Japanese conversation	Activity	
10:30-11:20	Japanese conversation	Japanese conversation	Japanese conversation	Japanese conversation	Japanese conversation		
11:30-12:20	Japanese conversation	Japanese conversation	Japanese conversation	Japanese conversation	Japanese conversation		
12:30-13:20	Lunch						
13:30-14:20	Listening comprehension / Kanji	Listening comprehension / Kanji	Listening comprehension / Kanji	Listening comprehension / Kanji	Listening comprehension / Kanji		
14:30-15:20	Grammar	Grammar	Grammar	Grammar	Grammar		
15:30-16:20	Reading comprehension	Reading comprehension	Reading comprehension	Reading comprehension	Reading comprehension		
16:30-18:20	Self-study (There will be a lot of homework so please prepare for the next day's class)						
Night			Activity		Activity		

* Please note that Standard Course lessons are optional and the course fee charged in additional to the JLPT Course.

* Participating in after school activities or day trips is optional.

* Some activities will cost an additional fee.

Student Voice

The lessons are very well-structured and focused on conversational ability, and it was really fun to go out every afternoon and practice whatever I'd learned that day on unsuspecting wait staff and my host family.

(Marcus, Singapore)



Student Voice

The staff and teachers are very kind and helpful. I almost feel like they are my own family. The class is taught with a small number of people so I learnt Japanese really fast and got to talk and have fun a lot with my teachers and my friends.

(Fah, Thailand)

Culture Course

Group Lessons + Cultural Lessons + Optional Activities

Cultural Courses are targeted at students who wish to become immersed in aspects of Japanese culture. In addition to 15 hours a week of small group lessons, 2 cultural lessons are included per week.

An example week in a Culture Course

	Mon.	Tue.	Wed.	Thu.	Fri.	Sat.	Sun.
9:30-10:20	Japanese	Japanese	Japanese	Japanese	Japanese	Activity	
10:30-11:20	Japanese	Japanese	Japanese	Japanese	Japanese		
11:30-12:20	Japanese	Japanese	Japanese	Japanese	Japanese		
12:30-13:20	Lunch						
13:30-14:20	Culture lesson	Activity		Activity	Culture lesson		
14:30-15:20							
Night			Activity		Activity		

- * Participating in after school activities or day trips is optional.
- * Some activities will cost an additional fee.

Spring Course

Group Lessons + Cultural Lessons + Optional Activities

Spring Course includes 15 hours of small group classes and 2 cultural lessons per week. Students can discover the freshness of changing seasons, view cherry blossoms and have many chances to make local Japanese friends.

An example week in the Spring Course.

	Mon.	Tue.	Wed.	Thu.	Fri.	Sat.	Sun.
9:30-10:20	Japanese	Japanese	Japanese	Japanese	Japanese	Activity	
10:30-11:20	Japanese	Japanese	Japanese	Japanese	Japanese		
11:30-12:20	Japanese	Japanese	Japanese	Japanese	Japanese		
12:30-13:20	Lunch						
After school	Activity	Culture Lesson	Activity	Culture Lesson	Activity		

- * Participating in after school activities or day trips is optional.
- * Some activities will cost an additional fee.

Summer Course

Group Lessons + Cultural Lessons + Optional Activities

Summer Course includes 15 hours of small group classes and 2 cultural lessons per week. Summer is a stunning season and students can be immersed in Japanese culture, whilst making the most of the activities on offer in a Japanese summer.

An example week in the Summer Course.

	Mon.	Tue.	Wed.	Thu.	Fri.	Sat.	Sun.
9:30-10:20	Japanese	Japanese	Japanese	Japanese	Japanese	Activity	
10:30-11:20	Japanese	Japanese	Japanese	Japanese	Japanese		
11:30-12:20	Japanese	Japanese	Japanese	Japanese	Japanese		
12:30-13:20	Lunch						
After school	Activity	Culture Lesson	Activity	Culture Lesson	Activity		

- * Participating in after school activities or day trips is optional.
- * Some activities will cost an additional fee.

Winter Course

Group Lessons + Cultural Lessons + Optional Activities

Winter Course includes 15 hours of small group classes and 2 cultural lessons per week. Optional activities are designed specifically to make beautiful winter, including local festivals and unique winter sports.

An example week in the Winter Course.

	Mon.	Tue.	Wed.	Thu.	Fri.	Sat.	Sun.
9:30-10:20	Japanese	Japanese	Japanese	Japanese	Japanese	Activity	
10:30-11:20	Japanese	Japanese	Japanese	Japanese	Japanese		
11:30-12:20	Japanese	Japanese	Japanese	Japanese	Japanese		
12:30-13:20	Lunch						
After school	Activity	Culture Lesson	Activity	Culture Lesson	Activity		

- * Participating in after school activities or day trips is optional.
- * Some activities will cost an additional fee.

JaLS GROUP Teaching Method

Output-orientated lessons

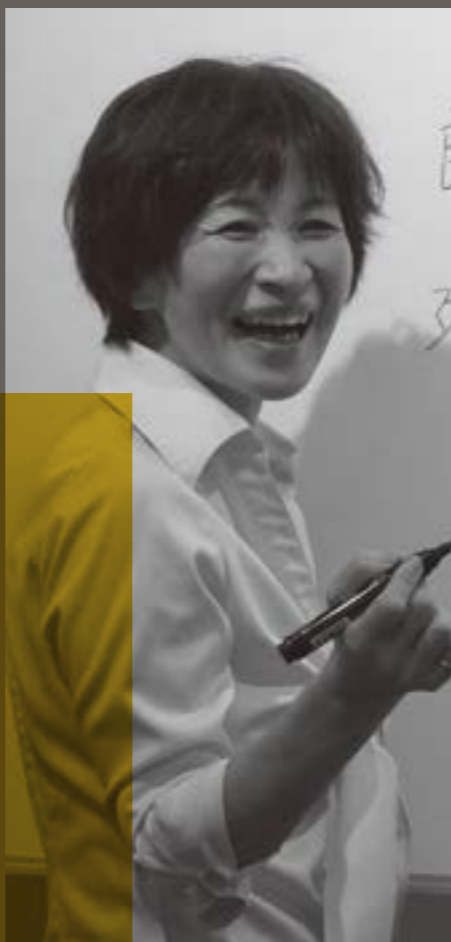
We believe that the best classroom-based lessons have real and practical application. When students come to Japan for study, we know that they want a unique and immersive experience that they cannot get in their home country. Often students come to us with some, or even advanced, grammar knowledge, but yet still struggle with speaking Japanese. We offer lessons that help you learn and use real Japanese in your daily experience.

Japanese lessons with practical content

In order to really master the Japanese language, students need to learn practical Japanese. In JaLS, students learn the skills and study topics that are necessary for everyday life, and so they are able to use class material in their normal lives right away.

Fun lessons filled with a variety of subjects

We believe that students learn Japanese most efficiently when they are in a fun and interesting class environment. At JaLS, we tackle various subjects and situations within our lesson time, so that students remain engaged in studying. For example, we involve many activities in our teaching methods: interviews with Japanese people, visits to Japanese companies or universities, Japanese guest events, presentations, and even cooperating with classes to make short films... Because of our small class sizes, this kind of flexibility is possible!



Teacher's Voice

I mainly teach group lessons in the morning sessions. In JaLS classes, we encourage students to incorporate their own experiences and opinions into the lesson and offer many opportunities to talk. We aim for the classes to become lively as students feel, 'I want to talk!' and can then share their real feelings.

There are many opportunities to meet people from various cultures or countries, which is often mentioned as a highlight of being a Japanese language teacher. But for me, the highlight of teaching is having a passion for the language, understanding the depth of Japanese and using the Japanese language to discover the wonder of Japan.

(Yuji Kosenda)

When I am teaching, what I keep in mind is 'will this scenario actually be used in real life?' I want students to use the sentence patterns they learn in lessons within real conversations outside of class, so we do a lot of practice actually talking about ourselves. Also, when students learn a word or a set grammar about how to ask and answer a question, I always want to help the students think about the next answer, so that they are able to continue a real conversation. I am often responsible for the beginner class. Because beginner level students often can not say what they would like to be able to express in Japanese yet, it's important for me to understand the language they would like learn and use. In my teaching, I am trying to support this learning process.

(Kanako Sugita)

Course level chart

JaLS offers many detailed levels of study, from complete beginner to advanced. We base our level criteria on the CEFR scale, an international indicator to evaluate language ability. Classes are determined by placement tests before student enrollment. At all levels, classes are designed for practical Japanese usage.

Level / Class Hours	CEFR (Can-Do)	CEFR Description	JLPT (reference)
Advanced2 / Over 300 hours	C2	Can understand with ease virtually everything heard or read. Can summarise information from different spoken and written sources, reconstructing arguments and accounts in a coherent presentation. Can express him/herself spontaneously, very fluently and precisely, differentiating finer shades of meaning even in more complex situations.	---
Advanced1 / 300 hours	C1	Can understand a wide range of demanding, longer texts, and recognise implicit meaning. Can express him/herself fluently and spontaneously without much obvious searching for expressions. Can use language flexibly and effectively for social, academic and professional purposes. Can produce clear, well-structured, detailed text on complex subjects, showing controlled use of organisational patterns, connectors and cohesive devices.	N1
Upper- Intermediate / 600 hours	B2	Can understand the main ideas of complex text on both concrete and abstract topics, including technical discussions in his/her field of specialisation. Can interact with a degree of fluency and spontaneity that makes regular interaction with native speakers quite possible without strain for either party. Can produce clear, detailed text on a wide range of subjects and explain a viewpoint on a topical issue giving the advantages and disadvantages of various options.	N2
Intermediate / 120 hours	B1	Can understand the main points of clear standard input on familiar matters regularly encountered in work, school, leisure, etc. Can deal with most situations likely to arise whilst travelling in an area where the language is spoken. Can produce simple connected text on topics which are familiar or of personal interest. Can describe experiences and events, dreams, hopes & ambitions and briefly give reasons and explanations for opinions and plans.	N3
Pre- Intermediate / 195 hours	A2	Can understand sentences and frequently used expressions related to areas of most immediate relevance (e.g. very basic personal and family information, shopping, local geography, employment). Can communicate in simple and routine tasks requiring a simple and direct exchange of information on familiar and routine matters. Can describe in simple terms aspects of his/her background, immediate environment and matters in areas of immediate need.	N4
Elementary / 150 hours	A1	Can understand and use familiar everyday expressions and very basic phrases aimed at the satisfaction of needs of a concrete type. Can introduce him/herself and others and can ask and answer questions about personal details such as where he/she lives, people he/she knows and things he/she has. Can interact in a simple way provided the other person talks slowly and clearly and is prepared to help.	N5
Beginner / 45 hours	intro	No concrete understanding of Japanese or prior learning is necessary. No knowledge of Japanese writing or grammar is needed. Although there is no language requirement before commencing study, students can quickly learn the Japanese writing scripts, basic grammar and can begin to use Japanese simply and slowly with support.	

04

School Facilities

State of the art facilities to help students learn, practice, relax, eat, drink, talk and make friends.



Warm and cozy, this is our students' second home.

JaLS is part of a warm and friendly community. Many Japanese people also study English, Chinese, Korean, Thai and other Asian languages in our sister schools which are based in the same facility. Our café and lounge spaces are great areas to make local Japanese friends, as well as meet students from all over the world. This warm and cozy space has a café and bookstore, so is designed for students to make friends naturally, through conversations over coffee or food and in everyday student life.



Concentrate LEARNING

Relax COMMUNITY



Classrooms

Our small classrooms can accommodate up to 8 students. These warm and bright spaces offer the perfect place to talk with teachers and students.



Private Study Room

20 individual study booths are available for use at any time. Many students take some quite study time here before returning home.



Lounge

Students can use our lounge for studying, or just as a space to take a break between classes. Many Japanese people also use this space, so it's a great place to meet people.



Café

Our café is a popular place for our students to socialize. Students can enjoy coffee, tea, snacks, and light food, whilst also relaxing, studying, and talking with many interesting people.



Book Shop

We sell a variety of materials in our book shop to help with Japanese study, such as grammar books, conversation practice and JLPT preparation material. We also have many resources recommended by our teachers!



Small Guidance Room

If students have any worries or concerns about their studies or life in Japan, they can speak to member of our team or teacher at any time. We do all we can to support each person.



Student Notice Board

All details of and changes to our student activities are displayed here. We hold activities almost every day, so there's plenty to choose from!



Community Space

We really value our community space. We have created a place where students can relax, and hope to form an environment where students can easily make friends.

Accommodation

Safe, convenient, and welcoming places to stay.

JaLS can support students to organize three different types of accommodation, depending on their preferences and hopes. To help our students have the most comfortable stay possible, all of our accommodation is selected and maintained according to strict guidelines. We will do our best to find the best fit for each student.

*Places are limited. In busy seasons, there may be cases where we may not be able to meet all student requests.

*Under 18 year-old students must stay with a host family.

Share House

Share house are a new and popular style of living for young Japanese adults and students. Students staying here will live with a mixture of Japanese and international housemates, so it is recommended for students who want to make friends in Japan. Students have their own room, but share other facilities.

*The minimum length of stay is one month.

Student Voice

The sense of community within the share house has made me feel like I have a home in Japan. I have met the most beautiful people and will be forever grateful to have shared these experiences with them.

(Angelika Germany)



Homestay

Our homestay families are warm and ready to welcome students as part of their family. Each student will have their own room, but eat breakfast and dinner with their family each day. We will carefully match students to a family based on preferences and things such as allergies.

*Students selecting the homestay option must use our airport pick-up service, as our driver will accompany students to the house and make sure of safe and punctual arrival.

Student Voice

The host family that had been organized by the school took care of me as if I was their child which made me feel even more comfortable as a student.

(Leng Thailand)



Private Apartment

Private apartments are fully furnished and include basic kitchen facilities. We recommend apartments for students who prefer their privacy, and who would like to return home to a quiet space. Apartment are located conveniently to train stations and the city

*Students selecting the apartment option must use our airport pick-up service.

Student Voice

I had everything I need to start my life in Japan.
I enjoyed living on my own in Japan, in a compact apartment with a kitchen and bathroom.

(Lee, Korea)



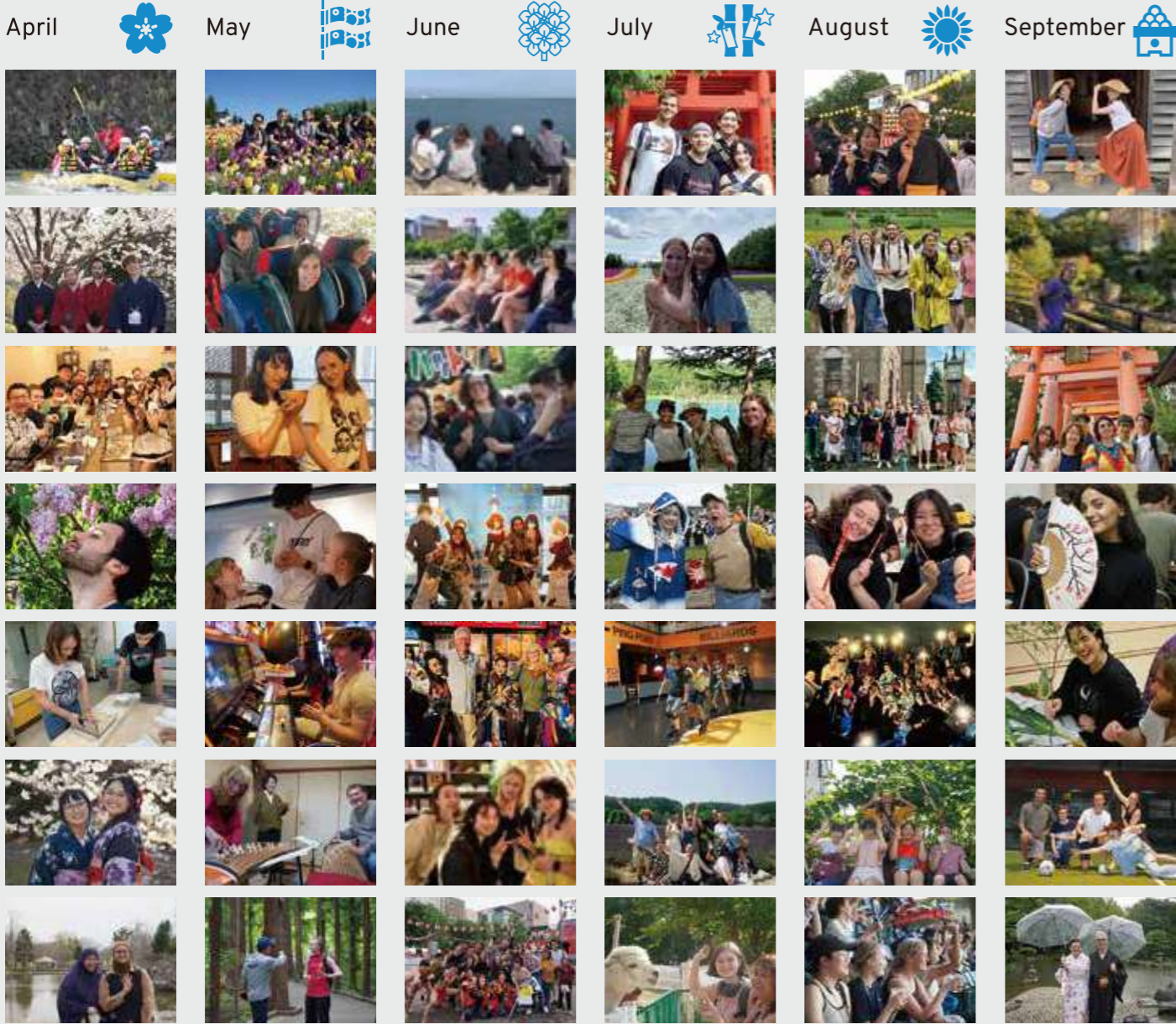


Activities and Culture Lessons

みんなありがとう!
I will miss you all so much
カリス

Activities

Have the most fun possible discovering Japan for yourself



Student Voice

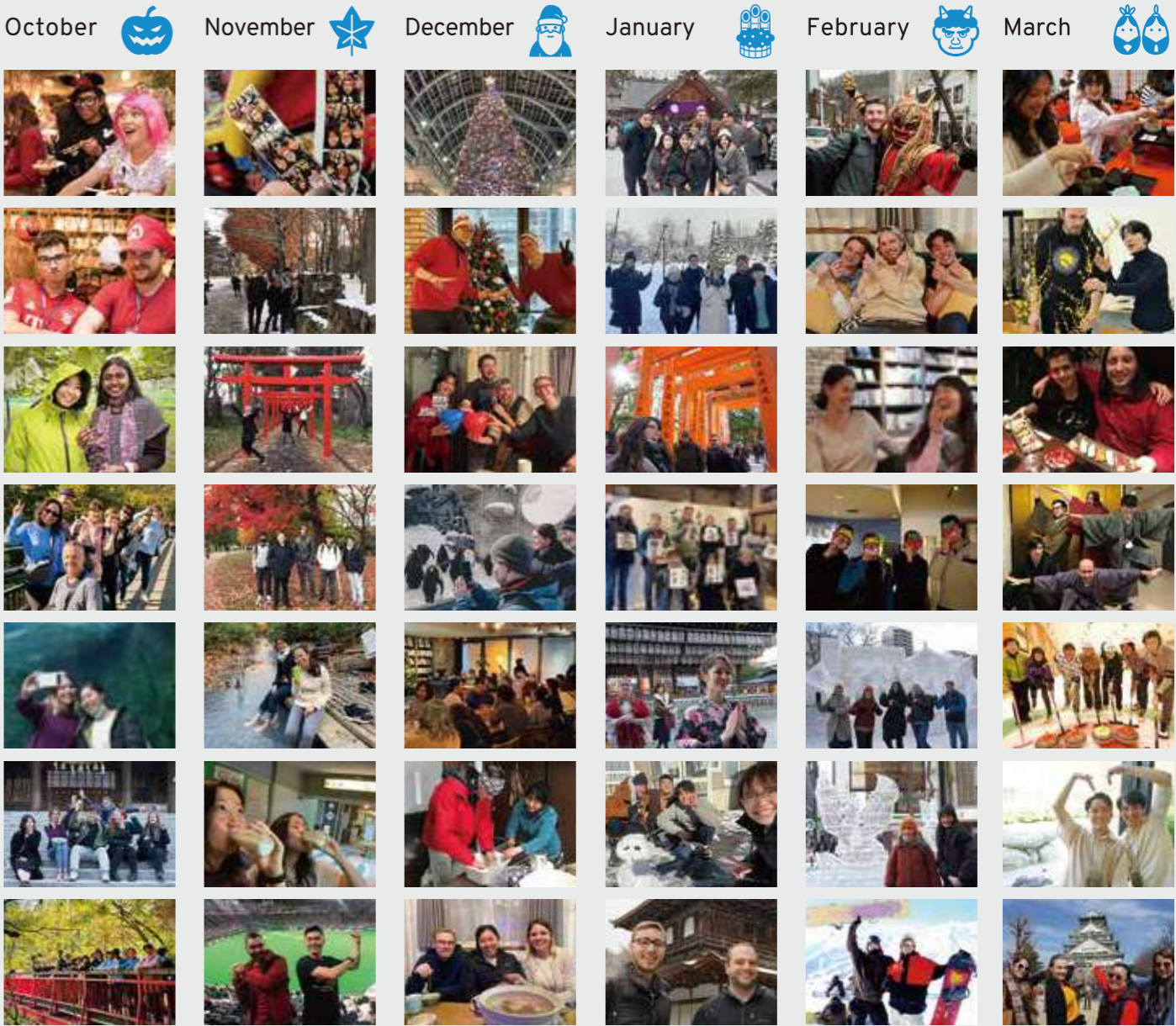
The program was amazing because they had so many cultural and fun activities to offer from making sushi to rock climbing. This school is a great place to build international relationships because the school is attended by students from all over the world. It was like a little united nations.

(Krisna, Indonesia)

Student Voice

Another positive aspect of the school is the diverse student body that it attracts. I am an American, and I can count the other Americans I encountered at the school on one hand. Everyone was very welcoming and happy to show me the rope in my first week. If you stick around to study later in the afternoon, you will also get the chance to meet some Japanese people who come to the school to study English! I met a language exchange partner who I am still in touch with that way.

(Ben, America)



Japanese Culture

In order to truly develop a deep knowledge of a country, it is important to dive into the culture as well as the language. JaLS has uniquely developed courses that enable students to learn many Japanese cultural arts from trained instructors. These lessons are also taught in Japanese, so they allow students to develop their listening and comprehension in an everyday setting. Studying Japanese culture and using the Japanese language at the same time is a great way for students to improve their abilities.



Student Voice

I was so happy that I chose JaLS because all of the staff there are so nice and the teachers are so kind and interesting. I made a lot progress in this school and met a lot of friends who are from different countries. It was unforgettable and the best experience!

(Micky, Macau)

Student Voice

I spent nearly 7 weeks at this school for their Winter program and two weeks of standard course, and overall it was the best 7 weeks of my life. Not only did I learn Japanese, but I had fun as well. I believe having fun is one important component when it comes to learning.

(Cherry, Canada)



Flower Arranging



Tea Ceremony



Kimono



Sushi Making



Sweet Making



Fan & Seal-Printing



Kendo



Karate



Taiko Drumming



Soba Making



Indigo Dyeing



Chopstick Crafting

and more...

Student Support

A school that will offer support from application to graduation.

JaLS offers a unique combination of comprehensive and personal assistance to ensure that every student feels fully supported before, throughout and even after their stay in Japan. Our team is ready to support students in English, Japanese, or a variety of other languages, and can help with advice, translation, introductions, and daily life in Japan. We believe that students thrive most in their studies when they can feel confident and comfortable in their wider living situation here, and therefore aim to help in any possible way along the journey.

Accommodation Arrangement

Whilst studying in Japan, it is important that students are completely comfortable in their accommodation, as well as at the school. We can assist with providing carefully selected and checked accommodation, and students can choose from homestay, share house or apartment. It is possible to choose accommodation based on your preferences.

Airport Pick Up

For students who require the service, we can arrange airport pick up, and even drop off. This is required for some accommodation options and for minors, but also recommended for students bringing large luggage or arriving early or late into the evening. It ensures a safe journey to the city.

Free Student Exchange Lunch Party

We have a free student lunch party on Monday once or twice a month. This enables students to meet others from difference classes, and encourages close friendships throughout our student body. Japanese teachers also participate so that students can keep practicing their Japanese too!

24-Hour Emergency Support

All students will be given our 24-hour emergency contact number. If students become sick outside of school hours, or over the weekend, they can contact us at any time and we are happy and available to help.

Sickness or Hospital Visits

Even throughout a short trip, there are occasions where students become sick or desire to seek medical attention. Our staff team are always available for support and will accompany students to the hospital to help with translation if necessary.

Daily Life or Study Support

Students are free to talk with our staff team at any time if they have concerns about studying or living abroad in Japan. Our staff have a vast experience of studying and living overseas and so are able to offer close and useful advice and support to students.



Student Voice

One of the best decisions I've made was studying at the JaLS for 8 weeks. Looking back, my experiences all feel like a really good dream that I didn't want to end.

If you want to learn real Japanese, there is no better way to do it than here. I made so many friends during my time... These people that I call my friends made Japan feel like a second home. We shared food, drinks, stories, embarrassing karaoke performances, and so much more.

And no matter what background anybody was from, we were all equal and in this adventure together. Each weekend JaLS had a new weekend excursion lined up for the students and it was these outings that were my most memorable.

If you're thinking about visiting or vacationing in Japan next summer, consider the JaLS! You'll do more, see more, and make many unforgettable friends along the way. And don't forget to bring your camera!

(Conrad, America)

