

2025

 Embassy  
Summer  
POWERED BY EC



# Language, Learning & Adventures

USA • CANADA • UK • MALTA • SOUTH AFRICA • UAE



# The Embassy Summer Journey

At Embassy Summer we deliver award winning English Language summer camp programmes for young learners, providing a truly life-changing experience for students from all over the world. We are a trusted and globally accredited provider with a 40+ year track record.

Our journey started off with just one summer school in Hastings back in the 1980's and since then we have taken our Embassy Summer camp experience around the world. Nowadays we offer locations in the UK, USA, Canada, Malta, South Africa and the UAE!

Our language programmes are available from 1 week to 8 weeks during the summer and, as well as English language classes, students take part in fun social activities as well as a variety of exciting excursions. An international summer camp is a great way to meet people from all over the world, learn about new cultures, discover new places and build skills such as self-confidence and communication.



## Index

The Embassy Summer Journey	2
Why choose Embassy Summer	4
Meet the team behind Embassy Summer	5
Embassy Summer Experience	6
Our Vision and Mission	10
A World of Choice	12
<b>EMBASSY SUMMER IN DUBAI</b>	<b>16</b>
<b>EMBASSY SUMMER IN SOUTH AFRICA</b>	<b>18</b>
Cape Town	18
<b>EMBASSY SUMMER IN MALTA</b>	<b>20</b>
Campus Hub	20
Hotelstay	22
Mediterranean College of Sports	24
Mediterranean College of Sports Homestay	26
<b>EMBASSY SUMMER IN NORTH AMERICA</b>	<b>28</b>
Tufts University - Boston	28
California State University - Los Angeles	30
UCLA - Los Angeles	32
LIU Brooklyn - New York	34
<b>EMBASSY SUMMER IN CANADA</b>	<b>36</b>
York University - Toronto	36
<b>EMBASSY SUMMER IN THE UK</b>	<b>38</b>
Downe House - Berkshire	38
Wellington College - Berkshire	40
University of Sussex - Brighton	42
Abbey College - Cambridge	44
University of Kent - Canterbury	46
University of East London - Docklands	48
Queen Mary, University of London - Mile End	50
London Southbank University - Southbank	52
University College London - Stratford	54
Royal Holloway University of London - Egham	56
Oxford Brookes University - Oxford	58
University of Portsmouth - Southsea	60
Blundell's school - Tiverton	62
<b>MAKING MEMORIES WITH EMBASSY SUMMER</b>	<b>64</b>
<b>STUDY TOURS</b>	<b>66</b>
<b>GLOBAL ACHIEVERS ACADEMY</b>	<b>69</b>





# Why Choose Embassy Summer?

## EXPERIENCE

Highly experienced and dedicated staff across the whole business, from the head office to the centres.

## SATISFACTION

We are experienced at delivering outstanding programmes, with an average student satisfaction rate of 99%, based on student feedback.

## NATIONALITY MIX

A truly global nationality mix with students coming to our centres from over 61 different countries.

## AWARD-WINNING

We have won several awards from recognised bodies such as the Eurasia Awards, ST Star Awards & BETA.

## LOCATIONS

Choose from a diverse portfolio of programmes across 24 centres in 6 countries and across 3 continents.



## Meet the team behind Embassy Summer

Embassy Summer boasts a core team of dedicated individuals at Head Office level across operations, sales, marketing, admissions and administration, and over 600 temporary staff operating our centres across the summer months.

Our experienced Head Office team is as diverse as the mix of students we welcome, ensuring a melting pot of nationalities which truly supports the overall student experience with Embassy Summer.



## THE EMBASSY SUMMER EXPERIENCE

# Keeping the Students Safe

### EXPERIENCED HEAD OFFICE TEAM

- Student safety and wellbeing is our first priority.
- All of our staff are required to complete Safeguarding Level 1 provided by the British Council.
- Each centre has at least one dedicated Welfare Officer who's sole responsibility is ensuring our students' wellbeing.

### WE CARE 24/7

- We provide supervision after class & activities and during excursions.
- We have dedicated night supervisors in our centres to make sure we provide 24-hour support to our students.
- If any medical issues arise we have access to first aiders on-site and, if required, our staff have established links with local doctors, dentists and hospitals.

### NURTURING AND HOMELY ENVIRONMENT

- We provide guardians to ensure that individual students are having a fun and safe experience in our centres.
- All of our residences have staff staying in the accommodation to provide a nurturing and safer environment.

### DEDICATED SUPPORT

- Dedicated support provided for our students throughout their stay.
- Full induction and orientation given on arrival.
- All students are issued with identity cards containing our emergency telephone details.

We place the highest priority on the welfare and safety of our students and provide a high standard of care and supervision across all of our programmes and in all of our global destinations.



The World Travel & Tourism Council (WTC) SafeTravels stamp enables students to recognise schools around the world which have adopted health and hygiene global standardised protocols – so they can experience 'Safe Travels'.

# Learning Inside & Outside the Classroom

### IMMERSION IN AN ENGLISH - SPEAKING ENVIRONMENT

- We cater for students of all levels, from beginner to advanced.
- Full immersive experiences provided in an English-speaking environment.

### STUDENTS - CENTERED LESSONS

- Students are placed in classes with a good nationality mix wherever possible.
- Students are encouraged to use the language to share opinions and discuss relevant topics.
- Teachers are trained and supported to run student-centred lessons which are fun & engaging.
- Teachers provide continuous valuable feedback to students to help them improve their level of spoken language and to give them added confidence and higher proficiency.

### REAL CONVERSATIONS

- All students take an English language level test before starting their classes.
- Typical Embassy Summer lessons start with a speaking activity, allowing students to express their opinions.
- Students might be asked to compare things or recommend something, ask for opinions, summarise a text or solve a problem.
- Teachers might pre-teach some functional phrases or highlight them during a feedback stage; the focus is to provide a platform for real conversation on engaging topics and for the teacher to help them to improve.
- All of our teachers receive training before they start and are supported by our academic team throughout the summer, enabling them to deliver practical lessons with clear learning outcomes that improve students' level of communication.

At Embassy Summer, we see language as a skill; less of a dry academic subject where the teacher explains structures and students complete exercises, and more of an opportunity to improve confidence in communicating and to practise speaking.



### OUR LANGUAGE PROGRAMME

Bespoke lesson materials, the Embassy lesson is designed to engage students in discussion, to develop the key life skills of collaboration and intercultural communication, and to provide extensive opportunities to practice and build on current language.

- Lessons taught by teachers trained to deliver the Embassy Lessons.
- 17 students per class and classes suitable for students of all levels.
- 15 hours a week
  - 20 x 45 mins in UK, US and Canada
  - 5 x 60 mins in Malta.
- All learning resources provided are age appropriate.
- All students receive an end of course certificate of attendance.





## A Good Night's Sleep

With so much to do during the daytime it is important that all of our students get a good night's sleep. Embassy Summer offers a wide range of residential options, all of which are risk assessed to ensure the ultimate safety for our students.

- Our centres offer residential accommodations on college campuses or in boarding schools. In some locations we also use a few carefully selected hotels.
- We recommend boarding schools for younger students due to their nurturing environment.
- Teenagers have a wider choice, including single rooms with ensuite facilities or hotel accommodations in Malta and Cape Town.
- Students can relax in shared common spaces.
- Host family options are available at some centres, with providers regularly checked by Embassy Summer staff.
- Experienced Homestay providers, residential guardians for individual students, residential staff, and night managers ensure our students' safety.
- All of our accommodation is cleaned regularly, with linen provided.
- We recommend that students bring their own towels, although some centres provide them. See individual centre pages for more information.
- All centres offer full board accommodations with balanced meals catering to most dietary requirements, ensuring students stay healthy, focused, and energised.

## Out & About

- A key part of our summer school experience is exploring local towns, cities, and famous attractions with new friends.
- Two-thirds of the experience is spent outside the classroom, so we tailor our programs to maximise the student adventure.
- Excursions and activities are as important as English classes, all programmes include full-day and half-day excursions, with optional trips for further exploration. Visit our centre pages for specific details.
- When not on excursions, students enjoy a wide range of activities, varying by location, including:
  - sports
  - discos
  - beach barbecues
  - cultural quizzes
  - and many more.
- Our activity programme ensures students meet peers from around the world, practice English and stay healthy, happy and engaged.





## Our Vision

# HELPING STUDENTS SUCCEED IN A GLOBAL COMMUNITY.



## Our Mission

We are inspiring people. As a team, a family, we inspire our students, our partners and each other every day.

We empower, share knowledge and create success. We dream big for ourselves and our students.

From a single school, to a global chain, to a leader in global education, our beliefs have never changed.

We believe in people and their limitless potential. We celebrate and nurture achievement and embrace every challenge along the way.

With a positive mindset, we innovate and keep moving forward. When we stumble, we pick ourselves up, re-focus and create a new path.

Everyone we meet on this amazing journey helps to shape who we are. These connections will also shape who you are, now and into the future.

**This is our mission.**







# A World of Choice

## South Africa & UAE

CENTRE	LOCATION	SIZE	ACCOMMODATION	AGE	DATES
<b>GEMS WELLINGTON ACADEMY</b>	Dubai	Medium	Single or twin en-suite rooms	12-18*	On request
<b>EC CAPE TOWN</b>	Cape Town	Medium	Multi-bedded hotel rooms	12-17	29 Jun-03 Aug

## Malta

CENTRE	LOCATION	SIZE	ACCOMMODATION	AGE	DATES
<b>CAMPUS HUB</b>	Malta	Large	Single, twin, triple or quad standard rooms	12-17	29 Jun-24 Aug
<b>HOTEL STAY</b>	Malta	Large	Triple or quad en-suite rooms	12-17	29 Jun-27 Jul
<b>MEDITERRANEAN COLLEGE OF SPORTS</b>	Malta	Small	Triple or quad rooms	12-17	22 Jun-10 Aug
<b>MCS HOMESTAY</b>	Malta	Large	Homestay triple or quad rooms	13-17	22 Jun-10 Aug

## USA

CENTRE	LOCATION	SIZE	ACCOMMODATION	AGE	DATES
<b>TUFTS UNIVERSITY</b>	Boston	Medium	Single, twin, triple standard rooms	13-18*	29 Jun-02 Aug
<b>CALIFORNIA STATE UNIVERSITY</b>	Los Angeles	Large	Triple standard rooms / twin, triple or quad en-suite rooms	12-18*	22 Jun-10 Aug
<b>UCLA</b>	Los Angeles	Medium	Twin or triple standard rooms	12-18*	22 Jun-03 Aug
<b>LIU BROOKLYN</b>	New York	Large	Triple standard rooms / twin, triple or quad en-suite rooms	13-18*	22 Jun-03 Aug

## Canada

CENTRE	LOCATION	SIZE	ACCOMMODATION	AGE	DATES
<b>YORK UNIVERSITY</b>	Toronto	Medium	Single en-suite or standard rooms	12-18*	06 Jul-03 Aug

## UK

CENTRE	LOCATION	SIZE	ACCOMMODATION	AGE	DATES
<b>DOWNE HOUSE</b>	Berkshire	Medium	Twin, triple or quad standard rooms	10-18*	08 Jul-05 Aug
<b>WELLINGTON COLLEGE</b>	Berkshire	Medium	Single standard rooms	10-17*	01 Jul-12 Aug
<b>UNIVERSITY OF SUSSEX</b>	Brighton	Large	Single or twin en-suite	11-18*	01 Jul-19 Aug
<b>ABBEY COLLEGE</b>	Cambridge	Medium	Single en-suite	12-18*	29 Jun-10 Aug
<b>UNIVERSITY OF KENT</b>	Canterbury	Medium	Single en-suite or standard rooms	11-18*	24 Jun-19 Aug
<b>ROYAL HOLLOWAY, UNIVERSITY OF LONDON</b>	Egham	Medium	Single en-suite or standard rooms	10-18*	24 Jun-19 Aug
<b>UNIVERSITY OF EAST LONDON</b>	London, Docklands	Large	Single en-suite rooms	11-18*	17 Jun-19 Aug
<b>QUEEN MARY, UNIVERSITY OF LONDON</b>	London, Mile End	Large	Single en-suite rooms	12-18*	24 Jun-19 Aug
<b>LONDON SOUTH BANK UNIVERSITY</b>	London, South Bank	Large	Single en-suite rooms	13-18*	22 Jun-17 Aug
<b>UNIVERSITY COLLEGE LONDON</b>	London, Stratford	Large	Single en-suite rooms	12-17	22 Jun-17 Aug
<b>OXFORD BROOKES UNIVERSITY</b>	Oxford	Medium	Single en-suite or standard rooms	12-18*	22 Jun-17 Aug
<b>UNIVERSITY OF PORTSMOUTH</b>	Southsea	Medium	Single en-suite rooms	12-18*	24 Jun-12 Aug
<b>BLUNDELL'S SCHOOL</b>	Tiverton	Medium	Single en-suite or standard rooms	8-17*	08 Jul-12 Aug



# GEMS Wellington Academy



## Dubai, United Arab Emirates

Dubai is one of the safest cities in the world and an international hub, making it a perfect place for an international summer school. Our summer camp in Dubai is located on the modern campus of GEMS Wellington Academy Silicon Oasis, located on the edge of academic city, just a short journey by private bus to our residence in the student village.

### DATE

- On Request

### AGE

- 12–17 (18 year olds accepted as part of a group with a leader)

[CHECK OUT THE FULL CENTRE DETAILS HERE](#)



The Centre

## Centre Highlights

### ACCOMMODATION

- Single and Twin en suite rooms
- Bathroom Ratio 1:1/ 1:2 students
- Flats of 5-9 with communal kitchen
- Single bed, wardrobe, desk, chair

### CLEANING

- Accommodation is cleaned weekly
- Linen cleaning is done weekly
- Laundry available at the residence, small fee

### SPORT FACILITIES

- Indoor sports halls
- Swimming pools
- Football pitch
- Tennis courts
- Dance studio
- Outdoor areas

### SHOPS AND CAFÉS

- Mini supermarket and cafes are available at the residence and students will have plenty of shopping opportunities during their stay with us in the many world class shopping malls in the UAE.

### MEALS

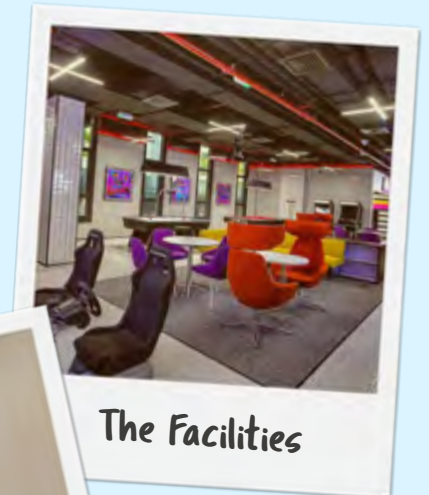
- Full board package

### TOWELS

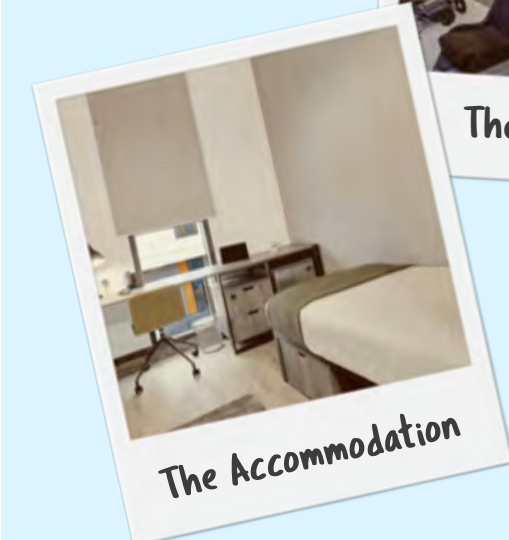
- Students bring their own towels

### WIFI

- Wifi is available on campus



The Facilities



The Accommodation

## A Sample Week

*The programme is for illustrative purposes only and is subject to amendments or alterations.*

	MORNING	AFTERNOON	EVENING
<b>SUN</b>		Arrivals/on-site activities	Welcome Games
<b>MON</b>	Testing/ Induction	Visit to the Burj Khalifa	Trashion Show
<b>TUE</b>	Lessons	Swimming / Football	The Great Egg Drop
<b>WED</b>	Lessons	Visit to The Dubai Fountain	Evening visit
<b>THUR</b>	Lessons	Sports afternoon	Quiz Night
<b>FRI</b>	Lessons	Visit to Dubai Marina and the Marina Mall	Disco
<b>SAT</b>	Full day trip – Red Dunes Desert Safari		Film Night / Quiz



Burj Khalifa visit



# EC Cape Town



## Cape Town, South Africa

Cape Town is one of the world's top tourist destinations, offering a wide variety of natural beauty, cultural highlights and historical significance. As a former British colony, English is the main spoken language of communication. EC Cape Town is located in the business district of the Cape Town city centre and is only a 5-minute walk to the Waterfront district, the most visited tourist attraction in South Africa. Students are housed in a hotel which is a short 7-minute walk to the school.

### DATE

- 29 June - 03 August

### AGE

- 12-17 (18 year olds accepted as part of a group with a leader)

[CHECK OUT THE FULL CENTRE DETAILS HERE](#)



## Centre Highlights

### ACCOMMODATION

- Students accommodated at StayEasy Cape Town City Bowl hotel
- En-suite twin room
- Bathroom Ratio 1:2 students
- Two single beds, desk, chair, wardrobe, bed linens

### CLEANING

- Accommodation is cleaned weekly
- Linen cleaning is done weekly
- Launderette is available within walking distance from the hotel at an additional cost

### SPORT FACILITIES

- Our programme offers a variety of sporting activities for students whilst with us that are pre-booked locally.

### SHOPS AND CAFÉS

- Our school and residence are in the heart of the city with plenty of shops and cafes nearby.

### MEALS

- Fullboard package

### DISTANCE TO CLASS

- Close walking distance to the school

### TOWELS

- Provided

### WIFI

- Wifi is available at the Hotel



Hinthunt



Lion's Head Hike

## A Sample Week

*The programme is for illustrative purposes only and is subject to amendments or alterations.*

	MORNING	AFTERNOON	EVENING
<b>SUN</b>	Arrivals/on-site activities		Welcome Games
<b>MON</b>	V&A Waterfront and Two Oceans Aquarium	Lessons	Bowling
<b>TUE</b>	Half day trip Kirstenbosch Botanical Gardens	Lessons	Karaoke Night
<b>WED</b>	Walking Bo Kaap Tour	Lessons	Ice Skating
<b>THUR</b>	Half day trip Lion's Head Hike	Lessons	Kahoot Quiz Night
<b>FRI</b>	Half day trip Ostrich Farm	Lessons	Party Bus
<b>SAT</b>	Full day trip Hermanus and Whale watching boat tour		Film Night



# Campus Hub



## Malta

Just a short journey by private bus from our school, St Martin's College, this purpose built student residence offers a variety of room styles, all set above a piazza designed for student life. With a variety of food and shopping outlets, a swimming pool and student common areas to relax in, the Campus Hub is a fantastic option for students looking for a more campus style feel to their summer school experience.

### DATE

- 29 June - 24 August

### AGE

- 12-17

[CHECK OUT THE FULL CENTRE DETAILS HERE](#)

[LOOK AT THE CENTRE GALLERY HERE](#)



The Centre

## Centre Highlights

### ACCOMMODATION

- Twin / Triple rooms
- Bathroom Ratio 1:5 students
- Cluster apartments and shared apartments
- Single bed, wardrobe, bedside table, desk, chair and AC
- Student lounge, communal kitchen and TV, swimming pool

### CLEANING

- Accommodation is cleaned weekly
- Bed linens are provided and changed weekly
- Laundry is available on site at an additional cost

### SHOPS AND CAFÉS

- The Campus Hub student village offers a variety of shops and cafes, including a large supermarket.

### MEALS

- Dinner and breakfast on campus, lunch served at school, packed lunch at weekends

### TOWELS

- Bath towels are provided and changed weekly, students should bring their own beach towel

### DISTANCE TO CLASS

- 10-minute private bus journey from the school

### WIFI

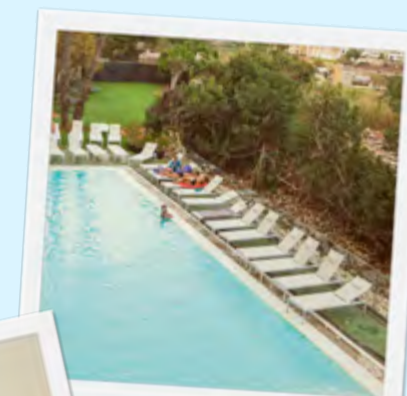
- Wifi is available on campus

### TRAVEL TIMES FROM NEAREST AIRPORT

- (MLA) Malta International Airport 20 mins by taxi

### DAY PROGRAMME OFFERED HERE

### OPTIONAL DIVING COURSE



The Facilities



The Accommodation

## A Sample Week

*The programme is for illustrative purposes only and is subject to amendments or alterations.*

	MORNING	AFTERNOON	EVENING
<b>SUN</b>		Golden Bay	Welcome Games
<b>MON</b>	Lessons	Valletta & Malta Experience	UNO Party
<b>TUE</b>	Lessons	Shopping & Swimming	Sports Festival
<b>WED</b>	Lessons	Limestone Heritage & Ghar Lapsi	Beach BBQ
<b>THUR</b>	Lessons	Harbour Cruise	International Party
<b>FRI</b>	Lessons	Comino	Inhouse Games
<b>SAT</b>	Gozo optional trip	Sandy Beach	Mdina treasure hunt



# Hotel Stay



## Malta

Our hotel options are located in St. Paul's Bay on the outskirts of Qawra and Bugibba which are Malta's largest seaside resort towns. The location is 17 km from the airport and only 15 km from Malta's capital city, Valletta. The coastline promenade is within walking distance from the hotels and boasts some of the islands' best open sea views.

### DATE

- 29 June - 27 July

### AGE

- 12-17

[CHECK OUT THE FULL CENTRE DETAILS HERE](#)

## The School



## Centre Highlights

### ACCOMMODATION

- Triple/Quad en-suite rooms
- Bathroom Ratio 1:4 students
- Single beds, wardrobe, and AC
- Lounge area, games room

### CLEANING

- Accommodation is cleaned every other day
- Bed linens are provided and changed every three days
- Laundry is available at an extra cost

### SHOPS AND CAFÉS

- There are shops located close to each of our hotels for students to buy snacks and essentials. The programme provides plenty of opportunity for shopping for bigger items!

### MEALS

- Dinner and breakfast in the hotel, lunch served at school, packed lunch at weekends

### TOWELS

- Bath towels are provided and changed daily, students should bring their own a beach towel

### WIFI

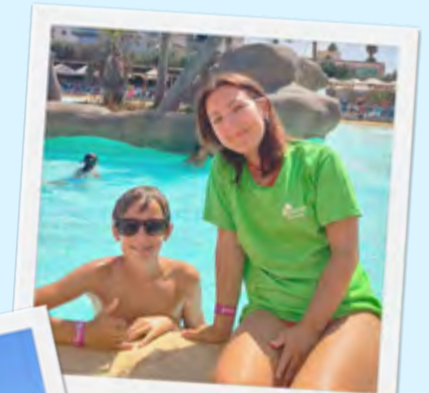
- Wifi is available on campus

### TRAVEL TIMES FROM NEAREST AIRPORT

- (MLA) Malta International Airport 40 mins by taxi

### DAY PROGRAMME OFFERED HERE

### OPTIONAL DIVING COURSE



Water Park



Boat Tour

## A Sample Week

*The programme is for illustrative purposes only and is subject to amendments or alterations.*

	MORNING	AFTERNOON	EVENING
<b>SUN</b>		Ghadira Bay	Welcome Games
<b>MON</b>	Water Park	Lessons	UNO Party
<b>TUE</b>	Mosta Rotunda & Mdina	Lessons	Sports Festival
<b>WED</b>	Fond Ghadir	Lessons	Bugibba Walk
<b>THUR</b>	Bowling	Lessons	International Party
<b>FRI</b>	Marsaxlokk & Blue Grotto	Lessons	Beach BBQ
<b>SAT</b>	Gozo optional trip	Sandy Beach	Valletta Night



# Mediterranean College of Sports



## Malta

The sun-kissed island of Malta is a treasure trove of beautiful beaches, crystal blue seas, and centuries of history, all topped off with that chilled out Mediterranean vibe.

Malta's first all-purpose campus with combined accommodation and academic spaces; purpose-built and designed with the student at its core. MCS is Malta's only live-in campus, with all amenities on-site or within close proximity, with convenience at the forefront of its conception.

### DATE

- 22 June - 10 August

### AGE

- 12-17

[CHECK OUT THE FULL CENTRE DETAILS HERE](#)



The Centre

## Centre Highlights

### ACCOMMODATION

- Triple and Quad Room
- Bathroom Ratio 1:5 students
- Single beds, desk, chair, wardrobe, air-conditioning

### CLEANING

- Bed linens are provided and changed weekly

### SPORT FACILITIES

- Outdoor swimming pool
- Athletics track
- Football pitch
- Multi-sport pavilion
- Gymnastics hall

### MEALS

- Breakfast, lunch, and dinner served on campus, packed lunch at weekends

### TOWELS

- Bath towels are provided and changed weekly, students should bring their own a beach towel

### WIFI

- Wifi is available on campus

### TRAVEL TIMES FROM NEAREST AIRPORT

- (MLA) Malta International Airport 20 mins by taxi

### DAY PROGRAMME OFFERED HERE

### OPTIONAL DIVING COURSE



The Facilities



The Accommodation

## A Sample Week

*The programme is for illustrative purposes only and is subject to amendments or alterations.*

	MORNING	AFTERNOON	EVENING
<b>SUN</b>		Ghajn Tuffieha	Welcome Games
<b>MON</b>	Lessons	Comino	UNO Party
<b>TUE</b>	Lessons	Esplora	Sports Festival
<b>WED</b>	Lessons	Birgu & Saluting Battery	Beach BBQ
<b>THUR</b>	Lessons	Qawra Beach & Optional Aquarium	International Party
<b>FRI</b>	Lessons	Bowling	Photo Challenge
<b>SAT</b>	Gozo optional trip	Sandy Beach	Mdina Treasure Hunt



# Mediterranean College of Sports Home Stay



## Malta

The sun-kissed island of Malta is a treasure trove of beautiful beaches, crystal blue seas, and centuries of history, all topped off with that chilled out Mediterranean vibe.

Malta's first all-purpose campus with combined accommodation and academic spaces; purpose-built and designed with the student at its core. MCS is Malta's only live-in campus, with all amenities on-site or within close proximity, with convenience at the forefront of its conception.

### DATE

- 22 June - 10 August

### AGE

- 13-17

[CHECK OUT THE FULL CENTRE DETAILS HERE](#)



The Centre

## Centre Highlights

### ACCOMMODATION

- Triple and Quad Rooms
- Bathroom Ratio 1:6 students
- Single bed, bedside table
- There are shared common spaces with the host family

### CLEANING

- Bedrooms are cleaned once a week
- Bed linens are provided and changed weekly
- Laundry is done once per week

### MEALS

- Dinner and breakfast with family, lunch served at school, packed lunch at weekends

### TOWELS

- Bath towels are provided and changed weekly, students should bring their own a beach towel

### WIFI

- Wifi is available on campus

### TRAVEL TIMES FROM NEAREST AIRPORT

- (MLA) Malta International Airport 20 mins by taxi

### DAY PROGRAMME OFFERED HERE

### OPTIONAL DIVING COURSE



Host Families



International Party

## A Sample Week

*The programme is for illustrative purposes only and is subject to amendments or alterations.*

	MORNING	AFTERNOON	EVENING
<b>SUN</b>		Ghajn Tuffieha	Welcome Games
<b>MON</b>	Lessons	Comino	UNO Party
<b>TUE</b>	Lessons	Esplora	Sports Festival
<b>WED</b>	Lessons	Birgu & Saluting Battery	Beach BBQ
<b>THUR</b>	Lessons	Qawra Beach & Optional Aquarium	International Party
<b>FRI</b>	Lessons	Bowling	Photo Challenge
<b>SAT</b>	Gozo optional trip	Sandy Beach	Mdina Treasure Hunt



# Tufts University



## Boston

The Embassy Summer centre in Boston is located on the beautiful campus of the prestigious Tufts University in Medford, Massachusetts, only 20 minutes to the historic city centre, and moments away from Cambridge. The campus has fantastic facilities including a modern sports hall, indoor swimming pool and running track with a recreational field and outdoor space as well as spacious residence halls.

### DATE

- 29 June - 02 August

### AGE

- 13-18 (18 year olds accepted as part of a group with a leader)

[CHECK OUT THE FULL CENTRE DETAILS HERE](#)

[LOOK AT THE CENTRE GALLERY HERE](#)



The Centre

## Centre Highlights

### ACCOMMODATION

- Single, twin and triple rooms available
- Bathroom Ratio 1:6 students
- Traditional US college dormitory rooms
- Single bed, wardrobe, desk, chair and AC
- Common room

### CLEANING

- Students must clean their own rooms
- bathrooms and common areas are cleaned daily
- Linen cleaning is done weekly
- Laundry is available on residence, small fee

### SPORT FACILITIES

- Baseball field
- Basketball and tennis courts
- Indoor swimming pool
- Gym available twice a week
- Outdoor areas for games and activities

### SHOPS AND CAFÉS

- There is a shop on campus, as well as small cafe for students' use

### MEALS

- Breakfast, lunch and dinner are on campus. Packed lunches are provided for full day trips

### DISTANCE TO CLASS

- Classes are a short walk across campus from the hall of residence

### TOWELS

- Provided

### WIFI

- Wifi is available on campus

### TRAVEL TIMES FROM NEAREST AIPORT

- (BOS) Logan International Airport 30 mins

### DAY PROGRAMME OFFERED HERE



Sports Activities



Faneuil Hall Square

## A Sample Week

*The programme is for illustrative purposes only and is subject to amendments or alterations.*

	MORNING	AFTERNOON	EVENING
<b>SUN</b>	Arrivals/On-site activities	Boston Shopping or Newport Cliffwalks	Welcome Party Getting to know you Games or sports
<b>MON</b>	Placement & Orientation	Davis Square with Scavenger Hunt, Campus Tour & University Life	Ice Cream Social Jeopardy Game Night
<b>TUE</b>	Lessons	Exploring the Freedom Trail	Tye Dye Tee Shirts or Night at the Gym
<b>WED</b>	Lessons	Visit to Harvard University & Cambridge Commons	Sports or Paint Night
<b>THUR</b>	Lessons	Visit to Faneuil Hall & Quincy Market	Downtown Crossing & Chinatown History with Shopping
<b>FRI</b>	Lessons	Trip to Sports Museum & Explore the North End	Dance Party with Karaoke
<b>SAT</b>		Charles River Walk & Museum of Science	Casino Night



# California State University



## Los Angeles

Welcome to sunny California! Our centre is located in the heart of Los Angeles and is central to downtown destinations. The university has new dormitory residences and the campus boasts many facilities such as a gym, basketball and volleyball courts.

### DATE

- 22 June - 10 August

### AGE

- 12–18 (18 year olds accepted as part of a group with a leader)

[CHECK OUT THE FULL CENTRE DETAILS HERE](#)

[LOOK AT THE CENTRE GALLERY HERE](#)

## The Centre



## Centre Highlights

### ACCOMMODATION

- Double / Triple standard rooms and twin/triple/quad apartment style rooms
- Bathroom Ratio 1:4 / 1:6 students
- Traditional US college dormitory rooms
- Single bed, wardrobe, desk, chair, AC
- Common Area

### CLEANING

- Students must clean their own rooms
- Common areas are cleaned daily
- Linen changed weekly on request
- Laundry available on campus at a small fee

### SPORT FACILITIES

- Basketball court
- Volleyball court
- Soccer field

### SHOPS AND CAFÉS

- There is a small shop onsite for students' use

### MEALS

- Breakfast, lunch and dinner are on campus. Packed lunches are provided for full day trips.

### DISTANCE TO CLASS

- On Campus

### TOWELS

- Provided

### WIFI

- Wifi is available on campus

### TRAVEL TIMES FROM NEAREST AIRPORT

- (LAX) Los Angeles International Airport approximately 1 - 1.5 hrs by taxi



Beverly Hills



Santa Monica Pier

## A Sample Week

*The programme is for illustrative purposes only and is subject to amendments or alterations.*

	MORNING	AFTERNOON	EVENING
<b>SUN</b>	Arrivals/ Games / Optional Trips		
<b>MON</b>	Placement & Orientation	Campus Tour / Supply Run	Ice Cream Social and Speed Friending
<b>TUE</b>	Lessons		Sports Night
<b>WED</b>	Hollywood Walk of Fame / Beverly Hills		Casino Night
<b>THUR</b>	Lessons		Movie Night
<b>FRI</b>	Downtown LA - Disney Concert Hall / Olvera Street / Little Tokyo		Karaoke Night
<b>SAT</b>	Santa Monica Pier		Spa Night



# UCLA

# HOLLYWOOD

## Los Angeles

Founded in 1920, UCLA is now one of the world's most famous universities. Located inland from Santa Monica, with Beverly Hills, Sunset Boulevard and The Getty Mansion close by, this impressive campus with its outstanding sports facilities is a perfect location for an Embassy Summer summer camp!

### DATE

- 22 June - 03 August

### AGE

- 12-18 (18 year olds accepted as part of a group with a leader)

[CHECK OUT THE FULL CENTRE DETAILS HERE](#)

[LOOK AT THE CENTRE GALLERY HERE](#)



## Centre Highlights

### ACCOMMODATION

- Twin / Triple standard
- Bathroom Ratio 1:8 students
- Traditional US college dorm rooms
- Single or bunk bed, wardrobe, desk, chair
- Common Area

### CLEANING

- Students must clean their own rooms
- Bathrooms are cleaned weekly
- Common areas are cleaned daily
- Laundry available on residence, small fee

### SPORT FACILITIES

- Tennis courts
- Basketball court
- Outdoor swimming pool
- Playing fields

### SHOPS AND CAFÉS

- There are many shops and cafes on campus at UCLA for students to use

### MEALS

- Breakfast, lunch and dinner are on campus. Packed lunches are provided for full day trips.

### DISTANCE TO CLASS

- Our classrooms are located within the same building as the students' accommodation

### TOWELS

- Provided

### WIFI

- Wifi is available on campus

### TRAVEL TIMES FROM NEAREST AIRPORT

- (LAX) Los Angeles International Airport approximately 1 - 1.5 hrs by taxi



Graduation



The Facilities

## A Sample Week

*The programme is for illustrative purposes only and is subject to amendments or alterations.*

	MORNING	AFTERNOON	EVENING
<b>SUN</b>	Arrivals/ Games / Optional Trips		
<b>MON</b>	Placement & Orientation	Campus Tour / Supply Run	Ice Cream Social and Speed Friending
<b>TUE</b>	Lessons		Sports Night
<b>WED</b>	Hollywood Walk of Fame / Beverly Hills		Casino Night
<b>THUR</b>	Lessons		Movie Night
<b>FRI</b>	Downtown LA - Disney Concert Hall / Olvera Street / Little Tokyo		Karaoke Night
<b>SAT</b>	Santa Monica Pier		Spa Night



# LIU Brooklyn



## New York

Our centre is located in Brooklyn, just one subway stop from downtown Manhattan. The breath-taking iconic skyline of New York can be viewed from Brooklyn Heights and everything that the city's got to offer is within easy reach.

### DATE

- 22 June - 03 August

### AGE

- 13–18 (18 year olds accepted as part of a group with a leader)

[CHECK OUT THE FULL CENTRE DETAILS HERE](#)

[LOOK AT THE CENTRE GALLERY HERE](#)



The Centre

## Centre Highlights

### ACCOMMODATION

- Single/double/triple standard rooms & Double/triple/quad en-suite rooms
- Bathroom Ratio 1:8 for standard and 1:4 for en-suite
- Traditional US college dormitory rooms or adjoining en-suite rooms
- Single bed, wardrobe, desk, chair, AC
- Common Area

### CLEANING

- Students must clean their own rooms
- Common areas are cleaned daily
- Linen cleaning is done weekly
- Laundry available on residence, small fee

### SPORT FACILITIES

- Nearby park for games and activities

### SHOPS AND CAFÉS

- There are shops and cafes nearby.

### MEALS

- Breakfast, lunch and dinner are on campus. Packed lunches are provided for full day trips.

### TOWELS

- Provided

### WIFI

- Wifi is available on campus

### TRAVEL TIMES FROM NEAREST AIRPORT

- John F. Kennedy International (JFK) 45 mins
- La Guardia International (LGA) 45 mins

### DAY PROGRAMME OFFERED HERE



Statue of Liberty



Visit to DUMBO

## A Sample Week

*The programme is for illustrative purposes only and is subject to amendments or alterations.*

	MORNING	AFTERNOON	EVENING
<b>SUN</b>	Arrivals & Tour of downtown Brooklyn, Shopping or Visit Little Island		Welcome Party or Cable Car to Roosevelt Island
<b>MON</b>	Placement & Orientation	Campus Tour / University Life	Times Square by Night
<b>TUE</b>	Lessons	Famous Macy's 34th Street Shopping	Explore South Street Seaport Shopping
<b>WED</b>	Lessons	Visit Bryant Park & New York City Library	Walk the High Line and Chelsea Market
<b>THUR</b>	Lessons	Walking Tour outside United Nations & Secrets of Grand Central Station	July 4th Celebration
<b>FRI</b>	Lessons	Explore Central Park	Dance Party & Celebrations
<b>SAT</b>	Day Trip to Coney Island		Movie Night or Sports in the Park

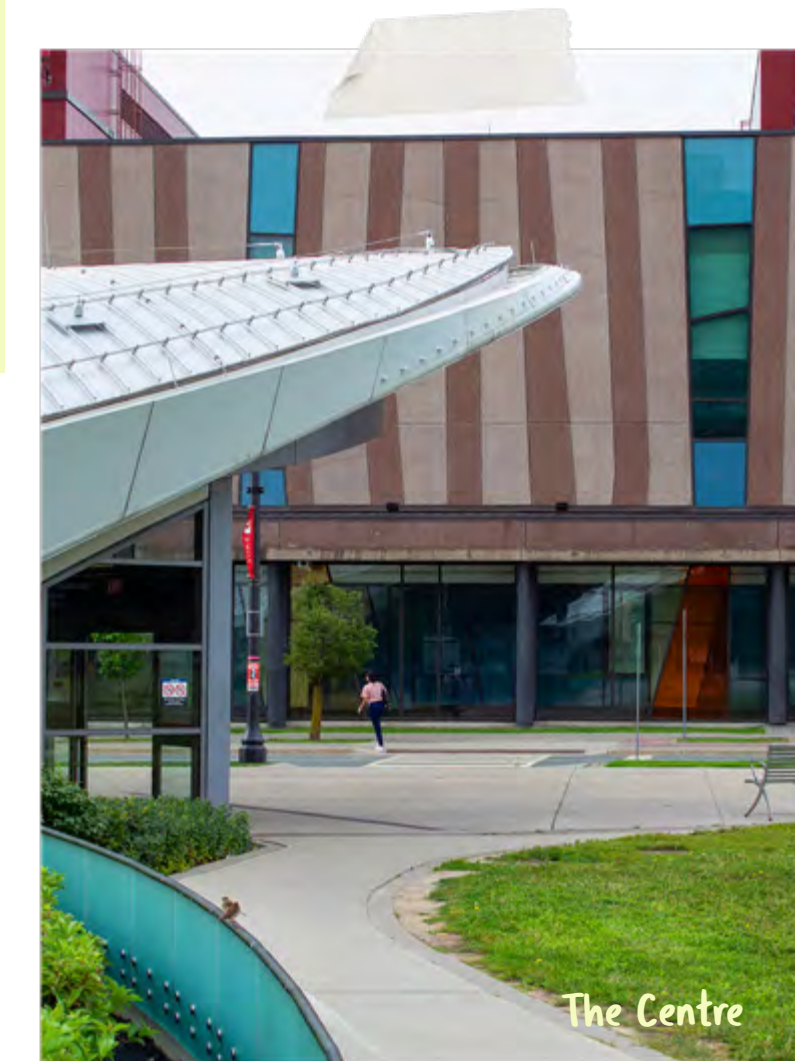


# York University



## Toronto

Our Toronto centre is located at York University about 30 minutes by subway from the city centre. The subway stop is located on campus and a five minute walk from the residence. This central location, on a modern university campus, provides a perfect base for a Canadian summer school experience.



### DATE

- 06 July - 03 August

### AGE

- 12–18 (18 year olds accepted as part of a group with a leader)

[CHECK OUT THE FULL CENTRE DETAILS HERE](#)

[LOOK AT THE CENTRE GALLERY HERE](#)

## Centre Highlights

### ACCOMMODATION

- Single & twin rooms
- Bathroom Ratio 1:6 students
- Traditional North American college dormitory rooms
- Single bed, wardrobe, desk, chair, AC
- Common Area

### CLEANING

- Students must clean their own rooms
- Common areas are cleaned daily
- Linen cleaning is done weekly
- Laundry available on residence, small fee

### SPORT FACILITIES

- Outdoor basketball courts.
- Indoor sports halls available

### SHOPS AND CAFÉS

- There are several shops and cafes on campus for students' use.

### MEALS

- Breakfast, lunch and dinner are on campus. Packed lunches are provided for full day trips.

### DISTANCE TO CLASS

- Classes are located a short walk from the student accommodation.

### TOWELS

- Provided

### WIFI

- Wifi is available on campus

### TRAVEL TIMES FROM NEAREST AIRPORT

- Toronto Pearson Airport (YYZ) 25 mins

### DAY PROGRAMME OFFERED HERE



Out & About



Niagara Falls Trip

## A Sample Week

*The programme is for illustrative purposes only and is subject to amendments or alterations.*

	MORNING	AFTERNOON	EVENING
<b>SUN</b>	Arrivals/ Yorkdale Shopping or Tour York Botanical Gardens		Welcome Party & Social
<b>MON</b>	Placement & Orientation	Explore Little Italy & Baldwin Village	Explore Round House Parl & Scavenger Hunt
<b>TUE</b>	Lessons	Visit Royal Ontario Museum	Activities Sports or Fashion Trashion Design Runway Show
<b>WED</b>	Lessons	Visit York University Library and Art Gallery	Visit to the CN Tower
<b>THUR</b>	Lessons	Distillery District Walking Embassy Summer-Led Tour	Concert in Toronto Music Gardens
<b>FRI</b>	Lessons	Tie-Dye Party	Dance Party
<b>SAT</b>	Explore Toronto Island or Upgrade trip to Niagara Falls with Outlet Shopping		Movie Night



# Downe House



## Berkshire

Nestled in Berkshire's picturesque countryside, Downe House combines rich history with academic excellence. Surrounded by rolling hills near Newbury, it offers a blend of classic charm and modern amenities, creating an immersive learning environment.

### DATE

- 08 July - 05 August

### AGE

- 10–18 (18 year olds accepted as part of a group with a leader)

[CHECK OUT THE FULL CENTRE DETAILS HERE](#)

[LOOK AT THE CENTRE GALLERY HERE](#)

## The Centre



## Centre Highlights

### ACCOMMODATION

- Twin/Triple/Quad Standard Rooms
- Bathroom ratio 1:4 students
- Shared Bathroom
- Each student has a bed, wardrobe, desk and chair

### CLEANING

- Accommodation is cleaned daily
- Linen cleaning is done weekly
- Rooms and communal areas are cleaned once a week
- Laundry service once per week

### SPORT FACILITIES

- Indoor sports centre
- Outdoor playing fields
- Indoor swimming pool
- Tennis courts

### MEALS

- Breakfast, lunch and dinner are on campus. Packed lunches are provided for full day trips.

### DISTANCE TO CLASS

- 2 minute walk from accommodation

### TOWELS

- Students bring their own towels

### WIFI

- Wifi is available on campus

### TRAVEL TIMES FROM NEAREST AIRPORTS

- (LGW) London Gatwick Airport 1 hr 45 mins
- (LHR) London Heathrow Airport 1 hr 15 mins
- (STN) Stansted Airport 2 hrs 30 mins
- (LTN) Luton Airport 2 hrs



The Facilities



Themed Disco

## A Sample Week

*The programme is for illustrative purposes only and is subject to amendments or alterations.*

	MORNING	AFTERNOON	EVENING
<b>TUE</b>	Arrivals/Departures Winchester with visit to Winchester Cathedral and The Great Hall		Welcome Games Activities
<b>WED</b>	Grimsbury Castle Walk On-site Sports	Testing/ Induction	Egg Drop
<b>THUR</b>	Outdoor Sports	Lessons	Welcome Disco
<b>FRI</b>	Arts and crafts project	Lessons	Film Night
<b>SAT</b>	Newbury Market and Shaw House	Lessons	Culture Club
<b>SUN</b>	Drama Workshop On-site Sports	Lessons	Themed Disco Big game bingo
<b>MON</b>	London with Westminster walking tour and visit to the National Gallery		Talent Show



# Wellington College



## Berkshire

Historic and traditional, a truly British experience. This famous and highly respected boarding school provides a world-leading educational environment, and a wealth of first class facilities, all set within an inspirational campus.



The Centre

### DATE

- 01 July –12 August

### AGE

- 10–17

[CHECK OUT THE FULL CENTRE DETAILS HERE](#)

[LOOK AT THE CENTRE GALLERY HERE](#)

## Centre Highlights

### ACCOMMODATION

- Standard single / twin / triple rooms
- Bathroom ratio 1:5 students
- Students are housed in traditional British boarding houses, separated by gender
- Bathrooms are shared and along the corridors
- Single bed, wardrobe, desk, chair

### CLEANING

- Accommodation is cleaned weekly
- Linen cleaning is done weekly
- There are laundry facilities available at the residence.

### SPORT FACILITIES

- Indoor and outdoor swimming pools
- Tennis courts
- Extensive playing fields
- Cricket nets

### MEALS

- Breakfast, lunch and dinner are on campus. Packed lunches are provided for full day trips.

### DISTANCE TO CLASS

- On Campus

### TOWELS

- Students bring their own towels

### WIFI

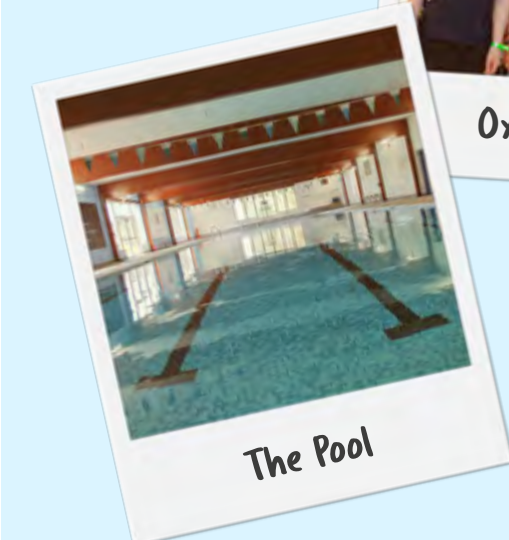
- Wifi is available on campus

### TRAVEL TIMES FROM NEAREST AIRPORTS

- (LGW) London Gatwick Airport 1 hr 15 mins
- (LHR) London Heathrow Airport 40 mins
- (STN) Stansted Airport 1 hr 45 mins
- (LTN) Luton Airport 1 hr 20 mins



Oxford Trip



The Pool

## A Sample Week

*The programme is for illustrative purposes only and is subject to amendments or alterations.*

	MORNING	AFTERNOON	EVENING
<b>TUE</b>	Arrivals/on-site sports and activities/ Optional trip to Thorpe Park		Welcome Games and Quiz
<b>WED</b>	Testing/ Induction	On-site sports and activities Crowthorne village walk	Disco
<b>THUR</b>	Lessons	Half-day trip to Windsor and Windsor Castle	Trashion Show Football Tournament
<b>FRI</b>	Lessons	Ultimate frisbee On-site sports and activities	Karaoke
<b>SAT</b>	Lessons	Half-day trip to Sandhurst	Photo scavenger hunt Kahoot Quiz
<b>SUN</b>	Lessons	Paper airplane competition On-site sports and activities	Disco
<b>MON</b>	Full-day trip to Oxford with walking tour and Oxford college		Casino night Nature walk



# University of Sussex



## Brighton

Known as 'London by the sea', Brighton is a multi-cultural city full of great beaches, hip cafes and trendy shops. Our centre is located on the campus of the well-known University of Sussex in Falmer, only a short bus or train journey from the city centre.

### DATE

- 01 July - 19 August

### AGE

- 11\*-18 (18 year olds accepted as part of a group with a leader)  
\*Individual bookings minimum age 13

[CHECK OUT THE FULL CENTRE DETAILS HERE](#)

[LOOK AT THE CENTRE GALLERY HERE](#)

## The Centre



## Centre Highlights

### ACCOMMODATION

- Single room with en-suite
- Bathroom ratio 1:1 students
- Flats of 5-9 with communal kitchen
- Single bed, wardrobe, desk, chair

### CLEANING

- Accommodation is cleaned weekly
- Linen cleaning is done weekly
- Laundry facilities available on campus, small fee

### SPORT FACILITIES

- Indoor sports hall
- Outdoor areas

### SHOPS AND CAFÉS

- Mini supermarket and cafes are available on campus

### MEALS

- Breakfast, lunch and dinner are on campus. Packed lunches are provided for full day trips.

### DISTANCE TO CLASS

- On Campus

### TOWELS

- Students bring their own towels

### WIFI

- Wifi is available on campus

### TRAVEL TIMES FROM NEAREST AIRPORTS

- (LGW) London Gatwick Airport 30 mins
- (LHR) London Heathrow Airport 1 hr 15 mins
- (STN) Stansted Airport 2 hrs
- (LTN) Luton Airport 2 hrs



Activities



The Accommodation

## A Sample Week

*The programme is for illustrative purposes only and is subject to amendments or alterations.*

	MORNING	AFTERNOON	EVENING
<b>TUE</b>		Arrivals/Activities/ Optional full-day excursion to London	Disco
<b>WED</b>	Lessons	Half-day trip to Arundel Castle	Photo scavenger hunt Culture club
<b>THUR</b>	Lessons	Mini Olympics Lib Dub Presentation	Kahoot quiz
<b>FRI</b>	Lessons	Local visit to Brighton with Sea Life Centre	Murder Mystery Lip Dub Presentation
<b>SAT</b>	Lessons	Half-day trip to Lewes and Anne of Cleves House	Film night
<b>SUN</b>	Lessons	Capture the flag or Drama or Dance Workshop	Brighton Fashion Show
<b>MON</b>	Full-day excursion: London with Westminster walking tour and National Gallery visit		Trashion Show



# Abbey College



## Cambridge

Explore the academic excellence of Cambridge, a timeless haven for aspiring scholars. With its prestigious university settings and serene environment, Cambridge offers a unique opportunity to immerse yourself in a world of learning and discovery.

### DATE

- 29 June - 10 August

### AGE

- 12–18 (18 year olds accepted as part of a group with a leader)

[CHECK OUT THE FULL CENTRE DETAILS HERE](#)

[LOOK AT THE CENTRE GALLERY HERE](#)



The Centre

## Centre Highlights

### ACCOMMODATION

- Single room with en-suite
- Bathroom ratio 1:1 students
- Some of our accommodation is laid out in flats with a small common area. Other rooms are in the main school building with en suite rooms along the corridors and a larger communal common room
- Bed, chest of drawers, wardrobe, desk, lamp

### CLEANING

- Accommodation is cleaned weekly
- Linen cleaning is done weekly
- Laundry facilities available on campus, small fee

### SPORT FACILITIES

- Abbey College sports hall
- Basketball court

### SHOPS AND CAFÉS

- There are several supermarket style shops close to the campus

### MEALS

- Breakfast, lunch and dinner are on campus. Packed lunches are provided for full day trips.

### DISTANCE TO CLASS

- Students accommodated in our flat style rooms have a short 5 minute walk to the classrooms.

### TOWELS

- Students bring their own towels

### WIFI

- Wifi is available on campus

### TRAVEL TIMES FROM NEAREST AIRPORTS

- (LGW) London Gatwick Airport 2 hrs
- (LHR) London Heathrow Airport 1 hr 45 mins
- (STN) Stansted Airport 45 mins
- (LTN) Luton Airport 1 hr



Out & About



The Accommodation

## A Sample Week

The programme is for illustrative purposes only and is subject to amendments or alterations.

	MORNING	AFTERNOON	EVENING
<b>SUN</b>	Arrivals/local activities or optional trip to Norwich		Welcome and Team Games
<b>MON</b>	Testing/ Induction	Walking Tour of Cambridge	Capture the Flag
<b>TUE</b>	Lessons	Indoor Sports Arts and Crafts - Cambridge Theme	Kahoot Quiz Night Culture club
<b>WED</b>	Lessons	Half day visit to the Iconic King's College	X-Factor Karaoke
<b>THUR</b>	Lessons	Mini Olympics	Big Game Bingo Photo Scavenger Hunt
<b>FRI</b>	Lessons	Cambridge Botanical Gardens	Disco night
<b>SAT</b>	Full-day trip to London with Westminster Walking Tour & Covent Garden		Film Night



# University of Kent



## Canterbury

Discover Canterbury, a historic city in Kent, boasting medieval streets, a renowned Cathedral, and UNESCO World Heritage status. Our centre sits on the University of Kent's large campus, close to the city centre, offering superb sports facilities and expansive outdoor spaces for added activities.

### DATE

- 24 June - 19 August

### AGE

- 11-18 (18 year olds accepted as part of a group with a leader)

[CHECK OUT THE FULL CENTRE DETAILS HERE](#)

[LOOK AT THE CENTRE GALLERY HERE](#)

## The Centre



## Centre Highlights

### ACCOMMODATION

- Single room with en-suite & standard rooms
- Bathroom ratio 1:1 (en-suite) & 1:5 (standard)
- Flats of 5 rooms
- Single bed, wardrobe, desk, chair

### CLEANING

- Accommodation is cleaned weekly
- Linen cleaning is done weekly
- Laundry facilities available on campus at a small fee

### SPORT FACILITIES

- Outdoor space
- Indoor sports hall

### MEALS

- Breakfast, lunch and dinner are on campus. Packed lunches are provided for full day trips.

### DISTANCE TO CLASS

- On campus

### TOWELS

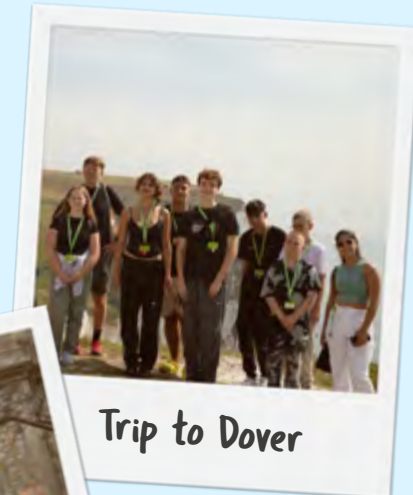
- Students bring their own towels

### WIFI

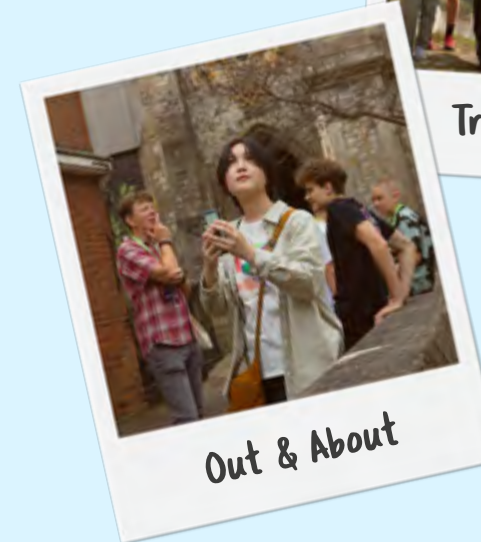
- Wifi is available on campus

### TRAVEL TIMES FROM NEAREST AIRPORTS

- (LGW) London Gatwick Airport 1 hr 15 mins
- (LHR) London Heathrow Airport 1 hr 30 mins
- (STN) Stansted Airport 2 hrs
- (LTN) Luton Airport 2 hrs



Trip to Dover



Out & About

## A Sample Week

*The programme is for illustrative purposes only and is subject to amendments or alterations.*

	MORNING	AFTERNOON	EVENING
<b>TUE</b>	Arrivals, On-site activities, Optional full-day visit to London		Welcome Game and Quiz
<b>WED</b>	Testing/ Induction	Canterbury City Visit	Talent Show Ultimate Frisbee
<b>THUR</b>	Lessons	Half-day trip to Dover Castle	Photo scavenger hunt Culture club
<b>FRI</b>	Lessons	Mini Olympics Lip Dub video preparation	Eurovision karaoke
<b>SAT</b>	Lessons	Half-day trip to Whitstable	Lip Dub Video Presentations Dodgeball
<b>SUN</b>	Lessons	School Assembly Disco Preparation	Themed disco
<b>MON</b>	Full-day trip to London with Westminster Walking Tour & visit to the National Gallery		Film Night



# University of East London



## Docklands

Our centre is located at the Docklands Campus of the University of East London, which is located next to the River Thames opposite London City Airport. From the modern residence buildings students will get a great view of London's iconic skyline and easy access to central London when you want to explore the city.

### DATE

- 17 June - 19 August

### AGE

- 11-18 (18 year olds accepted as part of a group with a leader)

[CHECK OUT THE FULL CENTRE DETAILS HERE](#)

[LOOK AT THE CENTRE GALLERY HERE](#)

## The Centre



## Centre Highlights

### ACCOMMODATION

- Single room with en-suite & standard rooms
- Bathroom ratio 1:1 students
- Flats of 4-6 rooms with communal kitchen
- Single bed, wardrobe, desk, chair

### CLEANING

- Accommodation is cleaned weekly
- Linen cleaning is done weekly
- Laundry facilities available on campus, small fee

### SPORT FACILITIES

- Astro turf pitch
- Indoor sports hall
- Outdoor basketball court

### MEALS

- Breakfast, lunch and dinner are on campus. Packed lunches are provided for full day trips.

### DISTANCE TO CLASS

- On campus

### TOWELS

- Students bring their own towels

### WIFI

- Wifi is available on campus

### TRAVEL TIMES FROM NEAREST AIRPORTS

- (LGW) London Gatwick Airport 1 hr 15 mins
- (LHR) London Heathrow Airport 1 hr 30 mins
- (STN) Stansted Airport 2 hrs
- (LTN) Luton Airport 2 hrs



Out & About



The Accommodation

## A Sample Week

*The programme is for illustrative purposes only and is subject to amendments or alterations.*

	MORNING	AFTERNOON	EVENING
<b>TUE</b>	Arrivals/Departures Sports/Local Activities Optional trip: Thorpe Park		Welcome Games Onsite Activities
<b>WED</b>	Westminster or London walking Tour	Testing/ Induction	Disco
<b>THUR</b>	London Natural History Museum	Lessons	London Quiz
<b>FRI</b>	Oxford Street Shopping	Lessons	Karaoke
<b>SAT</b>	Tower of London	Lessons	Arts & crafts Optional Musical
<b>SUN</b>	Olympic Park	Lessons	Photo Scavenger Hunt
<b>MON</b>	Brighton with walking tour and the visit to the Sea Life Centre		Kahoot Quiz



# Queen Mary, University of London



## Mile End, London

Our centre is located on the modern city campus of Queen Mary University of London, just a short journey on the tube from central London in zone 2. Students stay in the halls of residence in the student village, which has both shops and a sports hall which they use during their programme.

### DATE

- 24 June - 19 August

### AGE

- 12-18 (18 year olds accepted as part of a group with a leader)

[CHECK OUT THE FULL CENTRE DETAILS HERE](#)

[LOOK AT THE CENTRE GALLERY HERE](#)

## The Centre



## Centre Highlights

### ACCOMMODATION

- Single room with en-suite
- Bathroom ratio 1:1 students
- Flats of 5-9 with communal kitchen
- Single bed, wardrobe, desk, chair

### CLEANING

- Accommodation is cleaned weekly
- Linen cleaning is done weekly
- Laundry facilities available on residence, small fee

### SPORT FACILITIES

- Outdoor space
- Basketball court
- Indoor sports hall

### MEALS

- Breakfast, lunch and dinner are on campus. Packed lunches are provided for full day trips.

### DISTANCE TO CLASS

- On campus

### TOWELS

- Students bring their own towels

### WIFI

- Wifi is available on campus

### TRAVEL TIMES FROM NEAREST AIRPORTS

- (LGW) London Gatwick Airport 1 hr 20 mins
- (LHR) London Heathrow Airport 50 mins
- (STN) Stansted Airport 1 hr
- (LTN) Luton Airport 1 hr 40 mins



Tower Bridge



Dining Hall

## A Sample Week

*The programme is for illustrative purposes only and is subject to amendments or alterations.*

	MORNING	AFTERNOON	EVENING
<b>TUE</b>	Arrivals/Departures London trip with walking tour and Camden Market Optional trip to Thorpe Park		Welcome games Local walk Indoor Sports
<b>WED</b>	Testing/ Induction	Westminster or other London walking tour	Indoor sports or treasure hunt Egg drop
<b>THUR</b>	Lessons	Optional trip to Madame Tussauds/ Tower of London/ London Eye	Karaoke Optional Musical
<b>FRI</b>	Lessons	Visit to St. Paul's Cathedral	Indoor sports Late night shopping at Westfield or cable car experience
<b>SAT</b>	Lessons	London British Museum	Disco
<b>SUN</b>	Lessons	Tate Modern	Trashion Show
<b>MON</b>	Full-day trip: Brighton with walking tour and visit the Sea Life Centre or Cambridge with walking tour and college visit		Film Night Quiz



# London Southbank University



## Southbank, London

Our centre is located on the campus of London South Bank University (LSBU), only a short walk from attractions such as the London Eye and the London Dungeon. The location could not be more central!

Students stay at McLaren House just a couple of minutes from the main university building.

### DATE

- 22 June - 17 August

### AGE

- 13-17 Juniors | 18-21 Adults (18 year olds accepted as part of a group with a leader)

[CHECK OUT THE FULL CENTRE DETAILS HERE](#)

[LOOK AT THE CENTRE GALLERY HERE](#)



The Centre

## Centre Highlights

### ACCOMMODATION

- Single room with en-suite
- Bathroom ratio 1:1 students
- Arranged in flats of 5, 8 & 10 with communal kitchen
- Single bed, wardrobe, desk, chair

### CLEANING

- Accommodation is cleaned weekly
- Linen cleaning is done weekly
- Laundry facilities available on campus, small fee

### SPORT FACILITIES

- Indoor sports hall (when available)
- Local parks for outdoor sports

### SHOPS AND CAFÉS

- Café available in the teaching area. There are several shops (including a supermarket) within 5 minutes walking distance of the campus.

### MEALS

- Breakfast, lunch and dinner are on campus. Packed lunches are provided for full day trips.

### DISTANCE TO CLASS

- 5 minute walk

### TOWELS

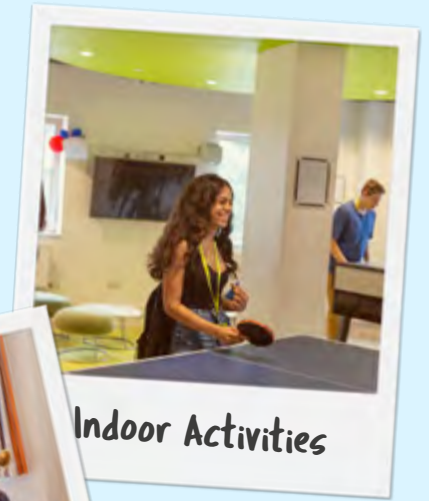
- Students bring their own towels

### WIFI

- Wifi is available on campus

### TRAVEL TIMES FROM NEAREST AIRPORTS

- (LGW) London Gatwick Airport 1 hr 10 mins
- (LHR) London Heathrow Airport 45 mins
- (STN) Stansted Airport 1 hr 30 mins
- (LTN) Luton Airport 1 hr 30 mins



Indoor Activities



The Accommodation

## A Sample Week

*The programme is for illustrative purposes only and is subject to amendments or alterations.*

	MORNING	AFTERNOON	EVENING
<b>SUN</b>	Arrivals/ Visit to Covent Garden		Sports in park Welcome and team games
<b>MON</b>	Testing/ Induction	Westminster or other London walking tour	Disco
<b>TUE</b>	Lessons	London National Gallery	Quiz Optional activity: Cinema, Bowling or Musical
<b>WED</b>	Lessons	Indoor sports or local activities	Karaoke
<b>THUR</b>	Lessons	Visit to Tower Bridge Experience	Shopping, Westfield or Oxford street Film Night
<b>FRI</b>	Lessons	Museum of London or Madame Tussauds London Eye Tower of London	Disco
<b>SAT</b>	Full-day excursion: Brighton with walking tour and visit to Sea life Centre		London-by-night walk Talent show



# University College London



## Stratford, London

Our new centre in London for 2025 is based on the new Stratford campus of UCL, one of the world's top 10 universities. Located on the 2012 London Olympic Park this beautiful campus boasts fantastic views over the London Stadium (now home to West Ham United), the Olympic Swimming Pool and Canary Wharf. The centre is a 10 minute walk from Westfields Shopping centre and 20 minutes by tube in to central London.

### DATE

- 22 June - 17 August

### AGE

- 12-17 Juniors (18 year olds accepted as part of a group with a leader)



## Centre Highlights

### ACCOMMODATION

- Single room with en-suite
- Bathroom ratio 1:1 students
- Arranged in flats of 9 with communal kitchen and lounge area
- Single bed, wardrobe, desk, chair

### CLEANING

- Accommodation is cleaned twice weekly
- Bed linen is changed weekly
- Laundry facilities available on campus, small fee

### SPORT FACILITIES

- Indoor sports hall
- Access to an Olympic swimming pool
- Access to outdoor space for onsite activities

### SHOPS AND CAFÉS

- There is a small cafe on site. Westfields shopping centre is a 10 minute walk away.

### MEALS

- Breakfast, lunch and dinner are taken in the modern student dining hall on site. On full day trips students are provided with a packed lunch

### DISTANCE TO CLASS

- 2 minute walk

### TOWELS

- Students should bring their own towels

### WIFI

- Wifi is available on campus

### TRAVEL TIMES FROM NEAREST AIRPORTS

- (LGW) London Gatwick Airport 1 hr 15 mins
- (LHR) London Heathrow Airport 1hr 30 mins
- (STN) Stansted Airport 45 mins
- (LTN) Luton Airport 1 hr 11 mins



Out & About



The Facilities

## A Sample Week

The programme is for illustrative purposes only and is subject to amendments or alterations.

	MORNING	AFTERNOON	EVENING
<b>SUN</b>	Arrivals/ Visit to Covent Garden		Sports in park Welcome and team games
<b>MON</b>	Testing/ Induction	Westminster or other London walking tour	Disco
<b>TUE</b>	Lessons	London National Gallery	Quiz Optional activity: Cinema, Bowling or Musical
<b>WED</b>	Lessons	Visit to Westfield Shopping Centre	Karaoke
<b>THUR</b>	Lessons	Visit to Tower Bridge Experience	Shopping Westfield or Oxford street Film Night
<b>FRI</b>	Lessons	Museum of London or MadameTussauds London Eye Tower of London	Disco
<b>SAT</b>	Full-day excursion: Brighton with walking tour and visit to Sea life Centre		London-by-night walk Talent show



# Royal Holloway University of London



## Egham

The gorgeous campus of Royal Holloway University of London with its fabulous Harry Potter style 'Founders' Building is a truly wonderful location for a summer school. The large and modern campus has its own supermarket, cafes, sports centre and lots of space to explore and relax!

### DATE

- 24 June - 19 August

### AGE

- 10\*-18 (18 year olds accepted as part of a group with a leader)

*\*Individual bookings minimum age 13*

[CHECK OUT THE FULL CENTRE DETAILS HERE](#)

[LOOK AT THE CENTRE GALLERY HERE](#)



The Centre

## Centre Highlights

### ACCOMMODATION

- Single room with en-suite
- Bathroom ratio 1:1 students
- Students are accommodated in flats with a shared common space
- Single bed, wardrobe, desk, chair

### CLEANING

- Rooms cleaned weekly
- Common rooms and bathrooms daily
- Linen cleaning is done weekly
- Laundry facilities available on campus, small fee

### SPORT FACILITIES

- Outdoor sports field
- Tennis courts
- Indoor sports hall
- Outdoor basketball courts

### SHOPS AND CAFÉS

- On-site supermarket
- Starbucks located on campus

### MEALS

- Breakfast, lunch and dinner are on campus. Packed lunches are provided for full day trips.

### DISTANCE TO CLASS

- On campus

### TOWELS

- Students bring their own towels

### WIFI

- Wifi is available on campus

### TRAVEL TIMES FROM NEAREST AIRPORTS

- (LGW) London Gatwick Airport 45 mins
- (LHR) London Heathrow Airport 15 mins
- (STN) Stansted Airport 1 hr 15 mins
- (LTN) Luton Airport 45 mins
- (LCY) London City 1 hr 15 mins



Out & About



The Facilities

## A Sample Week

*The programme is for illustrative purposes only and is subject to amendments or alterations.*

	MORNING	AFTERNOON	EVENING
<b>TUE</b>	Arrivals/on-site activities		Welcome games and quiz
<b>WED</b>	Testing/Induction	Egham town walk	Capture the flag
<b>THUR</b>	Lessons or Full-day excursion to London with Westminster walking tour and visit to the National Gallery		Kahoot quiz night Lip dub video making
<b>FRI</b>	Lessons or Full-day excursion to London with Westminster walking tour and visit to the National Gallery		X-Factor karaoke
<b>SAT</b>	Lessons	Half-day visit to Reaing and Reading Museum	Bingo Game Bingo Culture club
<b>SUN</b>	Lessons	Mini Olympics Team Events	Murder Mystery Night
<b>MON</b>	Full-day excursion: Oxford with Walking Tour and College Entrance		Film night Photo scavenger hunt



# Oxford Brookes University



## Oxford

Our centre is located on the Headington campus in Oxford Brookes University, within walking distance from the city centre and with plenty of outdoor space. Known for its universities, museums and architecture, Oxford promises a superior language learning environment, with great on-site campus facilities such as a sports hall, modern dining hall and several shops.

### DATE

- 22 June - 17 August

### AGE

- 12–18 (18 year olds accepted as part of a group with a leader)

*\*Individual bookings minimum age 13*

[CHECK OUT THE FULL CENTRE DETAILS HERE](#)

[LOOK AT THE CENTRE GALLERY HERE](#)



The Centre

## Centre Highlights

### ACCOMMODATION

- Single room with en-suite and standard rooms
- Bathroom ratio 1:1 / 1:5 students
- Flats of 5 rooms with a common area
- Single bed, wardrobe, desk, chair

### CLEANING

- Accommodation is cleaned weekly
- Linen cleaning is done weekly
- Laundry facilities available in residence at a small fee

### SPORT FACILITIES

- Indoor sports hall
- Communal green areas
- Playing fields
- Tennis and basketball courts

### SHOPS AND CAFÉS

- On-site supermarket
- Variety of cafés

### MEALS

- Breakfast, lunch and dinner are on campus. Packed lunches are provided for full day trips.

### DISTANCE TO CLASS

- Our residences are both approximately a 15 minute walk from the learning area

### TOWELS

- Students bring their own towels

### WIFI

- Wifi is available on campus

### TRAVEL TIMES FROM NEAREST AIRPORTS

- (LGW) London Gatwick Airport 2 hrs
- (LHR) London Heathrow Airport 1 hr
- (STN) Stansted Airport 2 hrs 30 mins
- (LTN) Luton Airport 1 hr 30 mins



Out & About



The Facilities

## A Sample Week

*The programme is for illustrative purposes only and is subject to amendments or alterations.*

	MORNING	AFTERNOON	EVENING
<b>SUN</b>	Arrivals/ on-site Activities		Outdoor Games Kahoot Quiz
<b>MON</b>	Testing/ Induction	Oxford Walking tour	Themed Disco Outdoor sports
<b>TUE</b>	Lessons	Indoor Sports Arts & Crafts	Balloon Battle
<b>WED</b>	Lessons	Half-day visit to Oxford Museum or College	Q&A with Staff Egg Drop
<b>THUR</b>	Lessons	Half-day trip to Bourton on the Water	Dance Workshop Karaoke
<b>FRI</b>	Lessons	Nature Walk Indoor Sports	Trashion Show Outdoor sports
<b>SAT</b>	Full-day trip to London with Westminster walking tour & visit to the National Gallery		Film Night Casino Night



# University of Portsmouth



## Southsea

BACK FOR 2025!!! After several years at Rees Hall we are delighted to be home again on the Langstone Campus in Southsea. This is a small, contained campus approximately 15-20 minutes from central Portsmouth and its many attractions including the Spinnaker Tower, HMS Victory and Gunwharf Quays with all its shops and restaurants!

### DATE

- 24 June - 12 August

### AGE

- 12-18 (18 year olds accepted as part of a group with a leader)

[CHECK OUT THE FULL CENTRE DETAILS HERE](#)

[LOOK AT THE CENTRE GALLERY HERE](#)

## The Location



## Centre Highlights

### ACCOMMODATION (NEWLY RENOVATED)

- Single room with en-suite / standard rooms
- Bathroom ratio 1:1 (en-suite) & 1:4 (standard)
- Rooms are laid out in flats with newly renovated kitchen and common spaces
- Single bed, wardrobe, desk, chair

### CLEANING

- Accommodation is cleaned weekly
- Linen cleaning is done weekly
- Laundry facilities available on campus at a small fee

### SPORT FACILITIES

- Large playing field overlooking the sea
- Optional access to tennis courts if required

### MEALS

- Breakfast, lunch and dinner are served in the on-site dining hall. Packed lunches are provided for full day trips.

### DISTANCE TO CLASS

- On campus

### TOWELS

- Students bring their own towels

### WIFI

- Wifi is available on campus

### TRAVEL TIMES FROM NEAREST AIRPORTS

- (LGW) London Gatwick Airport 1 hr 35 mins
- (LHR) London Heathrow Airport 1 hr 45 mins
- (STN) Stansted Airport 2 hrs 30 mins
- (LTN) Luton Airport 2 hrs



Out & About



Arundel Castle

## A Sample Week

*The programme is for illustrative purposes only and is subject to amendments or alterations.*

	MORNING	AFTERNOON	EVENING
<b>TUE</b>	On-site sports and Activities Optional trip to the Isla of Wight	Arrivals	Welcome Games and Quiz
<b>WED</b>	Testing/ Induction	Local visit to Swan Lake	Karaoke
<b>THUR</b>	Lessons	Trip to Arundel Castle	Mini-Olympics or International Night
<b>FRI</b>	Lessons	Team Challenge Games	Egg Drop
<b>SAT</b>	Lessons	Visit to Southsea Beach and South Parade Pier	Treasure Hunt
<b>SUN</b>	Lessons	Art and Crafts or Photography Walk	Disco
<b>MON</b>	Full day trip to London with walking tour and National Gallery visit		Film Night



# Blundell's School



## Tiverton

Tiverton is a beautiful river town in picturesque Dorset. Famous for being peaceful and safe, there are many fantastic places to go close by including Bath, Stonehenge, Bristol and many beaches where you'll find surfers enjoying the summer waves! Blundell's is one of the UK's top boarding schools and the facilities are second to none.

### DATE

- 08 July - 12 August

### AGE

- 8-17 (18 year olds accepted as part of a group with a leader)

## The Centre



## Centre Highlights

### ACCOMMODATION

- Single room with en-suite and standard rooms
- Bathroom ratio 1:1 / 1:6 students
- Single, double and triple rooms
- Single bed, wardrobe, desk, chair

### CLEANING

- Accommodation is cleaned weekly
- Linen cleaning is done weekly
- Laundry facilities available in residence

### SPORT FACILITIES

- Outdoor swimming pool
- Indoor and outdoor sports facilities
- Communal green areas

### SHOPS AND CAFÉS

- On-site Café

### MEALS

- Breakfast, lunch and dinner are on campus. Packed lunches are provided for full day trips.

### DISTANCE TO CLASS

- On campus

### TOWELS

- Students bring their own towels

### WIFI

- Wifi is available on campus

### TRAVEL TIMES FROM NEAREST AIRPORTS

- (LHR) London Heathrow 3 hrs 30 min
- (BRS) Bristol Airport 1 hr 10 min
- (SOU) Southampton Airport 2 hr 50 min

### DAY PROGRAMME OFFERED HERE

### SURF LESSONS AVAILABLE



The Facilities



The Pool

## A Sample Week

The programme is for illustrative purposes only and is subject to amendments or alterations.

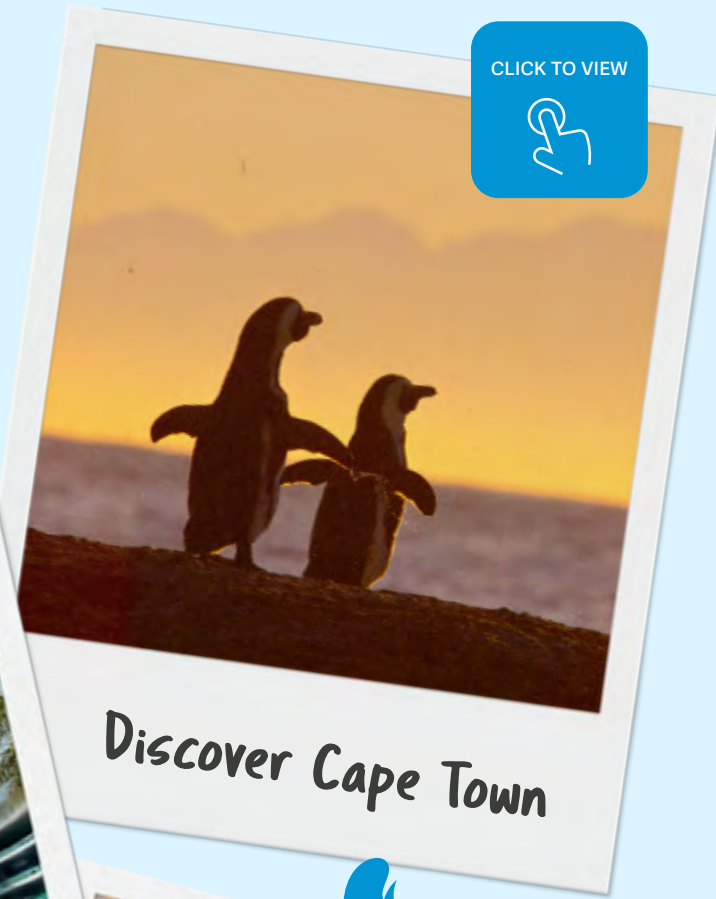
	MORNING	AFTERNOON	EVENING
<b>TUE</b>	Arrivals/ on-site Activities Day trip to Bristol		Outdoor Games Kahoot Quiz
<b>WED</b>	Testing/ Induction	Tiverton Walking tour	Themed Disco
<b>THUR</b>	Lessons	Indoor Sports Arts & Crafts	Balloon Battle
<b>FRI</b>	Lessons	Half-day visit to Exeter Museum	Egg Drop
<b>SAT</b>	Lessons	Half-day trip to the Beach	Karaoke
<b>SUN</b>	Lessons	Nature Walk Indoor Sports	Trashion Show Outdoor sports
<b>MON</b>	Full-day trip to Bath		Film Night Casino Night



# Making Memories with Embassy Summer



Discover Dubai



Discover Cape Town



Discover Malta



Discover The USA



Discover Canada



Discover The UK



Embassy StudyTours provide personalised, bespoke English programmes for junior groups. This can be anything from additional trips and excursions outside of the classroom to specialised classes. StudyTours groups from around the world can create their perfect study trip – learning English whilst having an adventure!

## WHAT WE OFFER

We have many, many years' experience delivering English programmes for international groups meaning that in each of our destinations, you will find a special programme designed to make the most of the unique features of that location.

## ENGLISH COURSES

Classrooms are modern, comfortable and equipped with the latest learning technology. Our teachers plan interesting lessons and there is free Wi-Fi in every centre. Customised courses are available on request.

## ACCOMMODATION

A variety of options are available to meet the needs and budget of your group. They are conveniently located so that you can travel easily to school and enjoy after-school activities.

## ACTIVITY PROGRAMME

A range of activities and excursions are available in each location to match the budget and interests of the group. StudyTours can easily accommodate your needs.

## EXCELLENT SERVICE

Expect a full service for Study Tour groups. Sales Managers work with you to create a customised programme and our Enrolment and Centre teams provide the logistic support to ensure a happy and successful group experience.



## Low Season Programmes

### GROUP COURSES IN ENGLAND, IRELAND, MALTA AND DUBAI

## Where Can You Study?

### MALTA

- **Campus Hub:** Get ready to discover everything this little island has to offer! Students stay at Campus Hub, a modern student residence located just 15 minutes by our private bus from the school. These newly built premises are designed and styled perfectly for students and feature a list of amenities that will help students' study-life balance.
- **Homestay:** When choosing to stay with a Maltese family, students have the unique opportunity to share and experience the day-to-day life of a local family together with all the diversity of the Maltese culture.
- **Mediterranean College of Sport:** Malta's first all-purpose campus with combined accommodation and academic spaces; purpose-built and designed with the student at its core. MCS is Malta's only live-in campus, with all amenities on-site or within close proximity, with convenience at the forefront of its conception.
- **Hotel Options:** The Bella Vista and Canifor Hotels are located in St. Paul's Bay on the outskirts of Qawra and Bugibba which are Malta's largest seaside resort towns. The coastline promenade is within walking distance from the hotels and boasts some of the Islands' best open sea views.

### UNITED KINGDOM

- **Bristol:** Study English in Bristol with Embassy StudyTours, staying with a local host family for an immersive experience. Enjoy a welcoming environment, explore Bristol's historic sites, and engage in cultural activities. Enhance your language skills while making lasting memories in this vibrant city.
- **Brighton:** Enjoy an immersive English language experience in Brighton with Embassy StudyTours and stay with a local host family. Enjoy a safe, supportive environment, explore Brighton's attractions, and participate in beach activities and cultural events. Enhance your English skills while making unforgettable memories in this vibrant seaside city.
- **Chessington World of Adventures Resort:** A fun learning experience in the unique rural location, Chessington Park & Resort, only 35 minutes away from central London. Its ideal location makes it the perfect setting for a study trip while offering the opportunity to explore central London with ease.

### IRELAND

- **Dublin:** Learn English in Dublin, Ireland's vibrant capital with rich history and culture. Practice your language skills with native speakers and enjoy EC Dublin's state-of-the-art facilities, located close to the city centre. With its dynamic environment and numerous opportunities for learning and exploration, Dublin is the perfect place for a fun and exciting language experience.

### DUBAI

- **GEMS Wellington Academy:** Study English in Dubai with Embassy StudyTours at our summer camp located on the modern campus of GEMS Wellington Academy Silicon Oasis, renowned for its top-tier facilities. Stay at The Myriad, offering twin en suite rooms, dining spaces, and a rooftop pool. Dubai, one of the safest cities in the world and an international hub, provides a perfect setting for an unforgettable learning adventure.



## Spring Programmes

# WE ARE EXCITED TO ANNOUNCE A NEW SET OF SPRING PROGRAMMES FOR 2025!

We will be at **Wellington College** from **March 30th to April 13th** ready to welcome groups from all around the world to this famous and iconic college in England.

Historic and traditional, a truly British experience.

This famous and prestigious boarding school provides a world leading educational environment, a wealth of first-class facilities, all set on an inspirational campus very close to London.

**We will be running a set of new programmes, discover them all below:**

### STANDARD STUDY TOURS PROGRAMME

The traditional mini-stay programme combining English lessons, excursions and activities!

### UNIVERSITY PREPARATION PROGRAMME

This programme is ideal for students wanting to learn more about UK universities, how they operate, what they look for in applicants to their undergraduate courses. We provide insights into the application process and real-life campus tours.

### OLYMPIAD PROGRAMME

Our Olympiad programme offers school groups a unique opportunity to compete against other schools from around the world in a competition filled with fun challenges based on the 4 'C's' identified as essential for 21st century learning and, ultimately, student success.

#### What are the 4 'C'S'?

- Communication
- Collaboration
- Critical Thinking
- Creativity

Students need these specific skills in order to enhance ways of thinking, learning, working and living in the world, helping them to prepare for their future success.

We are offering two programmes, at 7 or 12/14 night options to suit your students' needs.



**GLOBAL ACHIEVERS ACADEMY**  
POWERED BY EC



# TOMORROW'S LEADERS

All start with a remarkable journey

Discover new horizons and prepare for a brighter future with Global Achievers Academy.

 [globalachieversacademy.com](https://globalachieversacademy.com)





Embassy Summer forms part of EC English Holdings Ltd.

**[embassysummer.com](http://embassysummer.com)**  
**[ecenglish.com/en/young-learners](http://ecenglish.com/en/young-learners)**