



# YOUR 2024 GUIDE TO:

- Language Study
- University Admissions
- Career Training
- Work & Immigration Opportunities



ILSC Language Schools / ELS  
ST Star Chain School 2023

Greystone College  
ST Star Vocational College 2023

AUSTRALIA | CANADA | USA

ELS.EDU | ILSC.COM

Book at worldwide lowest price at:  
<https://www.languagecourse.net/school-els-nashville.php3>

+1 646 503 18 10  
 +31 858880253

+44 330 124 03 17  
 +7 4995000466

+34 93 220 38 75  
 +46 844 68 36 76

+81 (50) 50507957

+33 1-78416974  
 +47 219 30 570

+55 213 958 08 76

+41 225 180 700  
 +45 898 83 996

+86 183 2705 9463

+49 221 747 40042  
 +39 800 934 127

+43 720116182  
 +48 223 988 072



# Why Choose ELS, ILSC Language Schools, & Greystone College



## ACADEMIC EXCELLENCE

Our language schools and colleges have developed high-quality programs designed to help you achieve your personal learning and career goals.



## AMAZING STUDY & TRAVEL DESTINATIONS

Join us in the world's top study abroad destinations at our 22 language schools and 8 colleges in the USA, Canada, Australia, and India.



## PERSONALIZED SUPPORT FOR YOUR LIFE ABROAD

Every person you interact with at our schools is here to make your life abroad feel safe and supported, from the moment you contact us, until you achieve your goals.



## QUALITY ASSURANCE, AWARDS, & RECOGNITION

Study at an award-winning group of schools with membership in key quality assurance organizations that are committed to continuous improvement.



## VARIETY OF LEARNING OPTIONS

Our extensive selection of youth and adult language and career programs provide options for vacation learners, through to serious academic students, and everyone in between.



## UNIVERSITY ADMISSIONS

With over 700 university partners throughout the USA, Canada, and Australia, ELS and ILSC can open doors to more higher education opportunities than any other language school.



## CONNECTED COMMUNITY

Join a connected community of friends, teachers, activities coordinators, advisors, homestay families, and more who will make your experience unforgettable.

## OUR MISSION

*To provide our global community with transformative learning, living, and work experiences by offering the finest language, career, and higher education programs.*

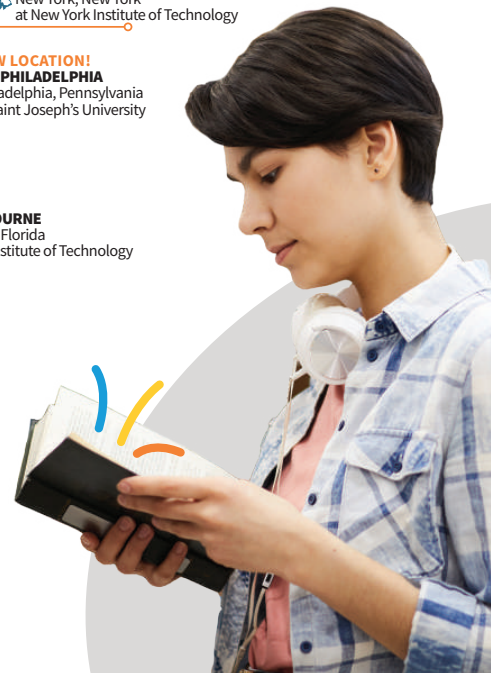


LANGUAGE SCHOOLS



Greystone COLLEGE

# Our Destinations



LanguageCourse<sup>net</sup> Book at worldwide lowest price at: <https://www.languagecourse.net/school-els-nashville.php3>

🇺🇸 +1 646 503 18 10  
🇧🇷 +31 858880253

🇬🇧 +44 330 124 03 17  
🇩🇪 +7 4995000466

🇪🇸 +34 93 220 38 75  
🇫🇷 +46 844 68 36 76  
☎ +81 (50) 50507957

🇫🇮 +33 1-78416974  
🇳🇴 +47 219 30 570  
🇧🇷 +55 213 958 08 76

🇨🇦 +41 225 180 700  
🇩🇪 +45 898 83 996  
🇨🇦 +86 183 2705 9463

🇩🇪 +49 221 747 40042  
🇮🇹 +39 800 934 127

🇪🇺 +43 720116182  
🇮🇪 +48 223 988 072



# Study in the USA

## Why Choose ELS?

- » Experience American student life while you study English at one of our ELS schools located on college or university campuses.
- » Over 600 college and university partners in the USA accept the ELS Certificate of Completion to meet their English entry requirement.
- » Learn from highly trained teachers with years of experience helping international students improve their conversational English or matriculate into a university program in the USA.
- » Enjoy customized curriculum and learning materials from National Geographic Learning.
- » Study in amazing destinations across the USA and experience life against the backdrop of stunning Atlantic or Pacific beaches, great lakes, iconic canyons, towering mountains, amazing national parks, and so much more!
- » ELS ACADEMIC Placement Test helps students understand their level and get placed in the right class before they arrive.

### INTENSIVE ENGLISH

30 lessons per week

The fastest learning option to get you speaking and ready for university quickly. ELS completion certificates are accepted by over 600 colleges and universities in the USA.



### SEMI-INTENSIVE ENGLISH

20 lessons per week

Study English half-time to improve quickly. In your spare time, explore the USA.



### AMERICAN EXPLORER

15 lessons per week

Add English classes to your holiday experience in the USA and build your skills to create a more immersive travel experience.



### YOUTH PROGRAMS

15 lessons per week

Experience English study and adventure for students age 10-17. Students can join our Fun and Sun Youth Program in sunny St. Petersburg, Florida, on the campus of Eckerd College.



## ELS 2024 SESSION START DATES

**Start A:** Jan 2, Jan 29, Feb 26, Mar 25, Apr 22, May 20, Jun 17, Jul 15, Aug 12, Sep 9, Oct 7, Nov 4, Dec 2

**Start B:** Jan 8, Feb 5, Mar 4, Apr 1, Apr 29, May 27, Jun 24, Jul 22, Aug 19, Sep 16, Oct 14, Nov 11, Dec 9

**Start A applies at:** ELS Cincinnati, ELS Cleveland, ELS Houston, ELS Melbourne, ELS Nashville, ELS N.Y. - Manhattan, ELS Philadelphia, ELS St. Petersburg.

**Start B applies at:** ELS Chicago, ELS Los Angeles County in La Verne, ELS San Francisco North Bay in San Rafael, ELS St. Paul.

**NOTE:** While all programs run in 4-week sessions, students can start on any Monday year-round (Tuesday if Monday is a public holiday).

For the best experience we encourage students to start at the beginning of a session where possible and not to start on week four of the session.

ELS PROGRAMS	INTENSIVE 30 Lessons/Hours per Week	SEMI-INTENSIVE 20 Lessons/Hours per Week	AMERICAN EXPLORER PROGRAM 15 Lessons/Hours per Week	
8:30 - 9:20 AM	<b>MON-FRI</b> SSP, LTC, & Skills Class	<b>MON-FRI</b> SSP, LTC, & Skills Class	<b>MON-FRI</b> SSP, LTC, or Skills Class	<b>MON-FRI</b> SSP, LTC, or Skills Class
9:30 - 10:20 AM				
10:30 - 11:20 AM				
11:30 - 12:20 AM				
1:30 - 2:35 PM	<b>MON-THU</b> Reading & Writing Class			
2:45 - 3:45 PM				

1 Lesson = 50 minutes • SSP - Structure & Speaking Practice • LTC - Language Technology Center

ELS LEVELS	101	102	103	104	105	106	107	108	109	110	111	112
------------	-----	-----	-----	-----	-----	-----	-----	-----	-----	-----	-----	-----

4

LanguageCourse<sup>net</sup> Book at worldwide lowest price at:  
<https://www.languagecourse.net/school-els-nashville.php3>

- +1 646 503 18 10
- +31 858880253
- +44 330 124 03 17
- +7 4995000466
- +34 93 220 38 75
- +46 844 68 36 76
- +81 (50) 50507957
- +33 1-78416974
- +47 219 30 570
- +52 213 958 08 76
- +41 225 180 700
- +45 898 83 996
- +86 183 2705 9463
- +49 221 747 40042
- +39 800 934 127
- +43 720116182
- +48 223 988 072



# Study in the USA

## UNIVERSITY ADMISSIONS

# University Admissions to over 600 colleges and universities in the USA

No TOEFL or IELTS test score required.

### COLLEGE & UNIVERSITY ADMISSION SERVICES. HOW IT WORKS:



### CONDITIONAL ADMISSION

A conditional admission means that you have been accepted to your university of choice upon completion of your English language studies. Your admission will be updated to a “full acceptance” once you present the university or college with your ELS Certificate of Completion as proof of English language proficiency. This route offers you:

- » A full study plan for your English language and university studies
- » A smooth transition from language study to university
- » An estimated university program start date

### DIRECT ADMISSION

If you already meet the English requirements for your university of choice, ELS can help you with your application process as long as you study for one session at ELS in person. This route offers you:

- » Application support
- » An easy introduction into American student life
- » A chance to brush up on your English



**LanguageCourse<sup>net</sup>** Book at worldwide lowest price at: <https://www.languagecourse.net/school-els-nashville.php3>

🇺🇸 +1 646 503 18 10  
🇧🇷 +31 858880253

🇬🇧 +44 330 124 03 17  
🇫🇷 +7 4995000466

🇪🇸 +34 93 220 38 75  
🇩🇪 +46 844 68 36 76

● +81 (50) 50507957

🇫🇷 +33 1-78416974  
🇩🇰 +47 219 30 570

🇧🇷 +55 213 958 08 76

🇨🇭 +41 225 180 700  
🇩🇪 +45 898 83 996

🇨🇳 +86 183 2705 9463

🇩🇪 +49 221 747 40042  
🇮🇹 +39 800 934 127

🇮🇹 +43 720116182  
🇮🇹 +48 223 988 072



Why Choose ILSC Language Schools

- » 30+ years of experience delivering life-changing language learning experiences to students from around the world at our 9 city-centre campuses in Australia and Canada.
» Flexible programs that adapt to your needs and interests - create your own customized study plan by choosing your schedule and Core and Elective classes in areas like Communication, Business English, Creative and Cultural English, and Academic English.
» At the end of every 4-week session, choose new classes and develop your unique learning journey.
» Excellent and supportive teachers meet one-on-one with you each session to review your progress and help you choose classes to meet your needs.
» Learn with ILSC textbooks specially designed to support learning outcomes, with content from trusted language education publishers, Oxford University Press, and Macmillan Education.
» Use the MyILSC App to prepare for arrival, to view your timetable and progress, and to access support any time during your studies through your mobile device.
» ILSC ACADEMIC & GENERAL Placement Tests help students understand their level and get placed in the right class before they arrive.

ENGLISH CLASS SELECTION

Table with columns: CORE CLASSES, LEVELS, CAMPUS. Rows include FOUNDATION, ENGLISH COMMUNICATION, ACADEMIC & TEST PREPARATION, BUSINESS ENGLISH, and CREATIVE & CULTURAL ENGLISH.

All Core Class, Elective Class, & Program descriptions, as well as assessment, program delivery, & completion information is available on our website: www.ilsc.com

In Australia, a study program is a mix of Core and Elective Classes that fall under one (or more) of four CRICOS Course Codes: 0101688 General English Program, 0101686 IELTS Mastery Program, 0101685 English for Academic Purposes Program, 0101687 Cambridge Mastery Program. If students choose classes that fall under more than one CRICOS Course Code, they will receive multiple eCOEs.

ILSC (Brisbane) PTY LTD is trading as ILSC Brisbane, ILSC Sydney, ILSC Melbourne, ILSC Adelaide, ILSC Perth. ILSC Australia RTO Number 31564, CRICOS Code: 02137M.

Table with columns: ELECTIVE CLASSES, LEVELS, CAMPUS. Rows include FOUNDATION & ENGLISH COMMUNICATION, ACADEMIC, TEST & UNIVERSITY PREPARATION, BUSINESS ENGLISH, and CREATIVE & CULTURAL ENGLISH.

The above class list showcases our most commonly available classes; however, additional classes may be offered. Class offerings and levels may vary depending on student enrollment and location.

A ADELAIDE B BRISBANE MB MELBOURNE P PERTH S SYDNEY M MONTRÉAL T TORONTO V VANCOUVER



## Specialty Programs

Learn English through programs tailored to your unique goals, needs, or age group.

### ILSC AUSTRALIA SPECIALTY PROGRAMS & CLASSES

- » IELTS Mastery
- » Cambridge Mastery
- » Café Work Skills Class
- » Medical English

### ILSC CANADA SPECIALTY PROGRAMS & CLASSES

- » Medical English (Vancouver only)
- » Volunteer Experience
- » ILSC High School Programs (Powered by TVO ILC)
- » French in Montréal

### JUNIOR PROGRAMS

	WINTER EXPERIENCE CAMP	JUNIOR HOMESTAY CAMP	FAMILY CAMP SUMMER	RESIDENCE CAMP	ESL HIGH SCHOOL BRIDGE PROGRAM
AGE	9-12* or 13-17	13 ~ 17	9-12* or 13-17	UBC 9 ~ 17 McGill 13 ~ 17	14-17
LOCATION	V	V, T, M	V	UBC-V McGill-M	V, T
PROGRAM FORMAT	AM Study PM Activity	AM Activity PM Study	AM Activity PM Study	UBC: AM study + PM activity McGill: PM Study+AM Activity	Full Time /Full Time Intensive Study
SKILLS PLUS	—	M: Drama & Performance T: Global Leadership V: Not Applicable	—	UBC: Influencing through Social Media McGill: Drama & Performance	—
START DATE	2025 Winter: Jan 5, Jan 12, Jan 19, Jan 26	Jun 30, Jul 7, Jul 14, Jul 21, Jul 28, Aug 4	Jun 30, Jul 7, Jul 14, Jul 21, Jul 28, Aug 4	UBC: Jun 30, Jul 7, Jul 14, Jul 21, Jul 28, Aug 4 McGill: Jun 30, Jul 7, Jul 14, Jul 21, Jul 28	Every Monday from May 21 - Sep 6 (except the last week of a session)

\* Students aged 9-12 must have a parent, older sibling aged 18+, or a guardian present in Vancouver during the program

### ILSC SCHEDULES

ILSC AUSTRALIA*	FULL TIME MORNING 24 Lessons/20 Hrs		FULL TIME AFTERNOON 24 Lessons/20 Hrs		FULL TIME EVENING 24 LESSONS/20 HRS		PART TIME MORNING 14.5 Lessons/12 Hrs	PART TIME EVENING 14.5 Lessons/12 Hrs
8:30 AM – 1:00 PM	MON-WED CORE Class	THU-FRI ELECTIVE Class					MON-WED CORE Class	
1:15 – 5:15 PM			MON-WED CORE Class	THU-FRI ELECTIVE Class				
5:30 – 9:30 PM					MON-WED CORE Class	THU-FRI ELECTIVE Class		MON-WED CORE Class

ILSC CANADA	FULL TIME INTENSIVE 30 Lessons/25 Hours		FULL TIME MORNING 24 Lessons/20 Hours		FULL TIME AFTERNOON 24 LESSONS/20 HOURS		PART TIME MORNING 17 Lessons/14 Hours	PART TIME AFTERNOON 15 Lessons/12 Hrs
8:30 – 11:15 AM	MON-FRI CORE Class		MON-FRI CORE Class				MON-FRI CORE Class	
11:45 AM – 1:00 PM	MON-FRI ELECTIVE Class		MON-FRI ELECTIVE Class					
1:15 – 5:15 PM	1:15-2:15 PM OR 2:00-3:00 PM**	MON-FRI ELECTIVE Class			MON-WED CORE Class	THU-FRI ELECTIVE Class		MON-WED CORE Class

\*Only the Full Time Morning and Part Time Morning schedules are available at the ILSC Perth campus at this time.

\*\*This class is offered at 1:15-2:15 in Toronto & Montréal and 2-3 PM in Vancouver.

**CORE CLASSES:** Core classes provide a strong, comprehensive foundation in the subject area.

**ELECTIVE CLASSES:** Skills classes build on your core learning and enhance linguistic skills through content focused on your particular interests, weak areas, or to help you achieve specific learning goals.

ILSC LEVELS	Beginner 1	Beginner 2	Beginner 3	Beginner 4	Intermediate 1	Intermediate 2	Intermediate 3	Intermediate 4	Advanced 1 OR Mastery 1	Advanced 2 OR Mastery 2
IELTS	-	-	-	4.0	4.5	5.0	5.5	6.0	6.5	7.0+



## Why Choose University Pathway

- » Get a conditional offer to enter 100+ colleges, TAFEs, and universities across Australia and Canada, with no TOEFL or IELTS test required!\*
- » Improve your academic English skills like essay-writing, note-taking, presentation skills, and more to support your success in your chosen higher education program.
- » According to our trusted partner schools, our students have the highest cumulative GPA among all their major pathway program partners.
- » 90%+ of our University Pathway students successfully reach their target English level and graduate.
- » Academic Excellence Assurance – our dedicated team of University Pathway Advisors help you define your goals, develop a plan for your success, monitor your progress, and stay on track.
- » Canadian students can take advantage of our Progression Guarantee.

### ILSC UNIVERSITY PATHWAY PROGRAM QUICK STATS

**6,000+** Successful graduates

**75+** Masters and PhD program pathways

**Fastest Pathway** Complete the program in as little as 4 weeks

### OVER 100 COLLEGE, TAFE, & UNIVERSITY PARTNERS

Studying at ILSC is your pathway to thousands of higher education programs across Australia, Canada, and the USA, with no TOEFL or IELTS score required!

**40+** College, TAFE, and university partners in Australia

**60+** College and university partners in Canada

## ACADEMIC UPGRADING THROUGH THE ILSC HIGH SCHOOL PROGRAM



If your chosen higher education program requires a particular high school credit that you are missing, or if you need to improve your grade, our ILSC High School Program offered in partnership with TVO ILC can help you earn Ontario Secondary School Credits that are recognized by higher education institutions in Australia, Canada, and the USA.

### ILSC 2024 SESSION START DATES

Jan 2, Jan 29, Feb 26, Mar 25, Apr 22, May 20, Jun 17, Jul 15, Aug 12, Sep 9, Oct 7, Nov 4, Dec 2

\*Some partner programs require additional testing.





## Online English



Whether you want to improve your academic English, prepare for an IELTS exam, transfer to one of ILSC's partner schools, or seamlessly enter Greystone College, our ILSC HELLO Online English program can help you achieve your goals as you study from anywhere in the world with an internet connection!



## Student Accommodations

ELS, ILSC, and Greystone College can connect you with a range of safe, comfortable accommodation options in your study city that offer convenient student living.



### HOMESTAY ACCOMMODATIONS

Live with a local family and discover a supported cultural immersion experience. Meal plans may be included or optional depending on your location.



### OFF-CAMPUS STUDENT RESIDENCES

Live independently in comfortable, modern students residences. A variety of options are available to match your budget and tastes.



### ON-CAMPUS STUDENT RESIDENCES (USA ONLY)

Live on-campus in a university dormitory to get a fully integrated USA college life experience. Available in some USA locations.

## Activities & Student Life

### TRIPS & ACTIVITIES

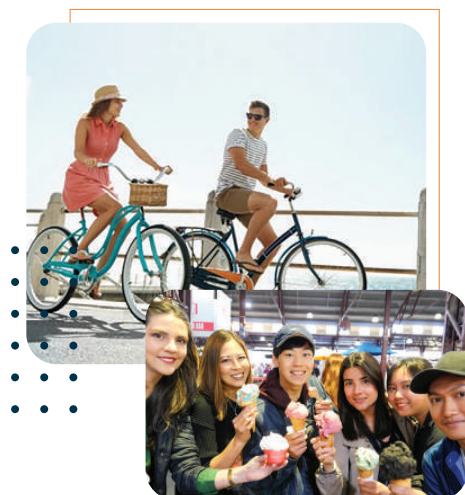
Explore top attractions and local sights that make your destination unique during afternoon activities, weekend, and multi-day trips organized by our schools.

### VOLUNTEER ACTIVITIES

ILSC and select ELS schools offer volunteer activities. Make a difference in your local school community and contribute to an issue you care about!

### THE ON-CAMPUS EXPERIENCE AT ELS

At ELS's on-campus destinations, enjoy full access to the host university's facilities and services which can include the library, dining halls, computer labs, recreation centers, fitness classes, pools, and more!





## Why Choose Greystone College Canada

- » 20 years of experience delivering career training programs in Montréal, Toronto, and Vancouver.
- » Morning and Evening schedules available with frequent start dates throughout the year.
- » 24/7 student health and well-being support
- » Co-op and practicum program options offer guaranteed placements that help you get real Canadian work experience in your field of study, while also supporting international students to practice their English.
- » Continuous job posting and biannual job fairs help students secure co-op, practicum, or off-campus work quickly and easily.
- » Combine academic and practical learning with instructors who bring recent and relevant industry experience in our Provincial Government accredited programs.
- » Get advanced standing in a diploma or degree program at one of our public or private partner schools which accept credit transfer from certain Greystone College programs.
- » Work off campus up to 20 hours per week.\*

\*Work rights are typically included with Canadian Study Permits for programs of 6 months or longer; however, they are not guaranteed and depend on the decisions of immigration officials in your study destination.

## CO-OP & PRACTICUM PROGRAMS

BUSINESS	ILSC LEVEL	SCHEDULE, CAMPUS, & DURATION <sup>  </sup>	
		MORNING	EVENING
Diploma in Business Communications (Co-op)* †	I2	V T 48-56 (24-32 + 24)	V T 86-88 (46-48 + 40)
Diploma in International Business Management (Co-op)* †	I4	V T 48-56 (24-32 + 24)	V T 86-88 (46-48 + 40)
Diploma in Project Management (Co-op)*	I4	-	V 114-116 (64-66 + 50)
AEC, International Business Management with Practicum - French (AEC   LCA.FA)	I4	-	M 80 (60 + 20)
AEC, International Business Management with Practicum - English (AEC   LCA.FA) §	I4	M 52-60 (32-40 + 20)	M 80 (60 + 20)
<b>HOSPITALITY</b>			
Diploma in Customer Service (Co-op)*	B4	V T 48-56 (24-32 + 24)	V T 86-88 (46-48 + 40)
Diploma in Hospitality Operations (Co-op)* †	I3	-	V 86-88 (46-48 + 40)
Certificate in Hospitality Skills (Co-op)	B4	T 26-34 (14-22 + 12)	-
<b>DIGITAL MARKETING</b>			
Diploma in Digital Marketing: Social Media Professional (Co-op)*	I3	V 48-56 (24-32 + 24)	V T 86-88 (46-48 + 40)
Diploma in Digital Marketing: Website Management and Design (Co-op)*	I3	-	V T 86-88 (46-48 + 40)
Diploma in Digital Marketing Professional (Co-op)*	I3	-	V T 128-130 (70-72 + 58)
Attestation of College Studies, Digital Marketing Specialist with Practicum (AEC   NWY.24) §	I3	M 56-64 (36-44 + 20)	M 92 (72 + 20)
<b>TEACHER TRAINING</b>			
Cambridge TESOL Diploma †	I3	V 8	-
TESOL-TKT Certificate †	I2	V 4	-
TKT-Young Learners Certificate †	I3	V 4	-
<b>NEW TECH PROGRAMS</b>			
Diploma in Data Analytics (Co-op)* †	I3	V 40-48 (20-28 + 20)	-
Diploma in Front End Development (Co-op)* †	I3	-	V 68-70 (38-40 + 30)
Diploma in Full Stack Development (Co-op)* †	I3	-	V 110-112 (62-64 + 48)

\* These co-op programs also have academic only versions available. Ask us for details.

† These co-op programs may have limited start dates depending on the campus location and schedule.

‡ Option to package these programs with programs at our partner colleges and universities for fast-tracked qualifications.

§ Programs are offered at Collège Greystone in Montréal in English.

|| Number of weeks includes any scheduled breaks during the academic or learning term, where applicable.

Program information is current as of Apr 26, 2024, but is subject to change. The most up-to-date information about Greystone College Canada programs and admissions is always available on our website: [www.ilsc.com/greystone-college/canada](http://www.ilsc.com/greystone-college/canada). In case of any discrepancy between this document and our website, the website information will prevail.

### GREYSTONE COLLEGE CANADA 2024 START DATES

**Morning Programs:** Jan 2, Jan 29, Feb 26, Mar 25, Apr 22, Aug 12, Sep 9, Oct 7, Nov 4, Dec 2, Dec 30

**Evening Programs:** Jan 29, Mar 25, May 21, Jul 15, Sep 9, Nov 4, Dec 30



## Why Choose Greystone College Australia

- » Learn in dynamic programs that integrate academic concepts with hands-on experiential learning through excursions and in-class activities.
- » Build long-term learning pathways by combining progressive programs in specialized areas to build skills that are in demand by Australian and global employers.
- » Ongoing start dates throughout the year and affordable tuition fees.
- » Work off campus while you study to help pay for your living expenses.
- » Flexible schedules combine in-class and online learning components that fit around your work and personal schedule – when space is available, students have the option to switch schedules to fit other obligations.
- » 24/7 online study and online assessment submission.
- » Credit Transfer options – get advanced placement in degree programs at our partner schools: Griffith University Queensland, CQUniversity Australia, Torrens University Australia, Collarts, and Southern Cross University.

BUSINESS	ILSC LEVEL	WEEKDAY	WEEKEND	DURATION* (WEEKS)
Certificate II in Workplace Skills <b>BSB20120</b> CRICOS COURSE CODE 105113G	B4	A B MB P S	A B MB P S	52
Certificate III in Business <b>BSB30120</b> CRICOS COURSE CODE 104774M	I1	A B MB P S	A B MB P S	60-64
Certificate IV in Business <b>BSB40120</b> CRICOS COURSE CODE 104778G	I2	A B MB P S	A B MB P S	60-64
Diploma of Business (Organisational Development) <b>BSB50120</b> CRICOS COURSE CODE 104773A	I3	A B MB P S	A B MB P S	60-64
Diploma of Business <b>BSB50120</b> CRICOS COURSE CODE 104773A	I3	A B MB P S	A B MB P S	60-64
<b>MARKETING</b>				
Certificate IV in Marketing and Communication <b>B40820</b> CRICOS COURSE CODE 104777H	I3	A B MB P S	-	60-64
Diploma of Marketing and Communication <b>BSB50620</b> CRICOS COURSE CODE 104775K	I3	A B MB P S	-	60-64
Advanced Diploma of Marketing and Communication <b>SB60520</b> CRICOS COURSE CODE 107808D	I3	A B MB P S	-	60-64
Extend your advanced Diploma by adding: Innovation and Leadership Skill Set <b>BSBSS00097</b>	I3	A B MB P S	-	76-80 (Total program)
Extend your advanced Diploma by adding: Innovation Practice Skill Set <b>BSBSS00096</b>	I3	A B MB P S	-	100 (Total program)
<b>ENTREPRENEURSHIP</b>				
Certificate III in Entrepreneurship & New Business <b>BSB30220</b> CRICOS COURSE CODE 107807E	B4	A B MB P S	A B MB P S	52
Certificate IV in Business (Leadership) <b>BSB40120</b> CRICOS COURSE CODE 104778G	I2	A B MB P S	A B MB P S	60-64
Certificate IV in Business (Sustainability) <b>BSB40120</b> CRICOS COURSE CODE 104778G	I2	A B MB P S	A B MB P S	60-64
Diploma of Business (Digital Transformation) <b>BSB50120</b> CRICOS COURSE CODE 104773A	I3	A B MB P S	A B MB P S	60-64
<b>PROJECT MANAGEMENT</b>				
Certificate IV in Business (Sustainability) <b>BSB40120</b> CRICOS COURSE CODE 104778G	I3	A B MB P S	A B MB P S	60-64
Diploma of Project Management <b>BSB50820</b> CRICOS COURSE CODE 104109M	I3	A B MB P S	A B MB P S	60-64
<b>LEADERSHIP &amp; INNOVATION</b>				
Certificate IV in Business (Leadership) <b>BSB40120</b> CRICOS COURSE CODE 104778G	I3	A B MB P S	A B MB P S	60-64
Diploma of Leadership and Management <b>BSB50420</b> CRICOS COURSE CODE 104145G	I3	A B MB P S	A B MB P S	60-64
Advanced Diploma of Leadership and Management <b>BSB60420</b> CRICOS COURSE CODE 104776J	I3	A B MB P S	A B MB P S	52
Extend your advanced Diploma by adding: Innovation and Leadership Skill Set <b>BSBSS00097</b>	I3	A B MB P S	A B MB P S	68 (Total Program)
Extend your advanced Diploma by adding: Innovation Practice Skill Set <b>BSBSS00096</b>	I3	A B MB P S	A B MB P S	88-92 (Total Program)

Greystone College Australia also offers short-term specialization programs that compile units from some of our full qualifications.

\*Length of the program may vary depending on start dates and breaks.

Greystone College Program descriptions are available on our website. [www.greystonecollege.com](http://www.greystonecollege.com)

**A ADELAIDE B BRISBANE MB MELBOURNE P PERTH S SYDNEY**

ILSC (Brisbane) PTY LTD is trading as ILSC-Brisbane, ILSC-Sydney, ILSC-Melbourne, ILSC-Adelaide, ILSC-Perth, Greystone College, and ILSC Australia RTO Number 31564, CRICOS Course Code: 02137M.

### GREYSTONE COLLEGE AUSTRALIA 2024 START DATES

Jan 29, Feb 26, Mar 25, May 20, Jun 17, Jul 15, Sep 9, Oct 7, Nov 4, Dec 30

### SCHEDULED BREAKS

Jan 30—Feb 24; May 22—Jun 16; Sep 11—Oct 6; Dec 25-29 (Christmas)

# START YOUR LEARNING JOURNEY.

## EASILY SUBMIT YOUR APPLICATION ONLINE



See Digital Brochure & Pricing



LANGUAGE SCHOOLS



Greystone COLLEGE

USA LOCATIONS

AUSTRALIA, CANADA, & INDIA LOCATIONS

AUSTRALIA AND CANADA LOCATIONS

ELS Language Centers is accredited by the Accrediting Council for Continuing Education & Training (ACCET) and affiliated with key quality assurance & industry organizations.

ILSC & Greystone College are accredited by or affiliated with key quality assurance & industry organizations.

AUSTRALIA | CANADA | USA

ELS.EDU | ILSC.COM

Book at worldwide lowest price at: <https://www.languagecourse.net/school-els-nashville.php3>

+1 646 503 18 10  
 +31 858880253

+44 330 124 03 17  
 +7 4995000466

+34 93 220 38 75  
 +46 844 68 36 76

+81 (50) 50507957

+33 1-78416974  
 +47 219 30 570

+55 213 958 08 76

+41 225 180 700  
 +45 898 83 996

+86 183 2705 9463

+49 221 747 40042  
 +39 800 934 127

+43 720116182  
 +48 223 988 072