



**ELI** ENGLISH  
LANGUAGE  
INSTITUTE

elischools.com

# ACCELERATED

# ENGLISH

DUBLIN

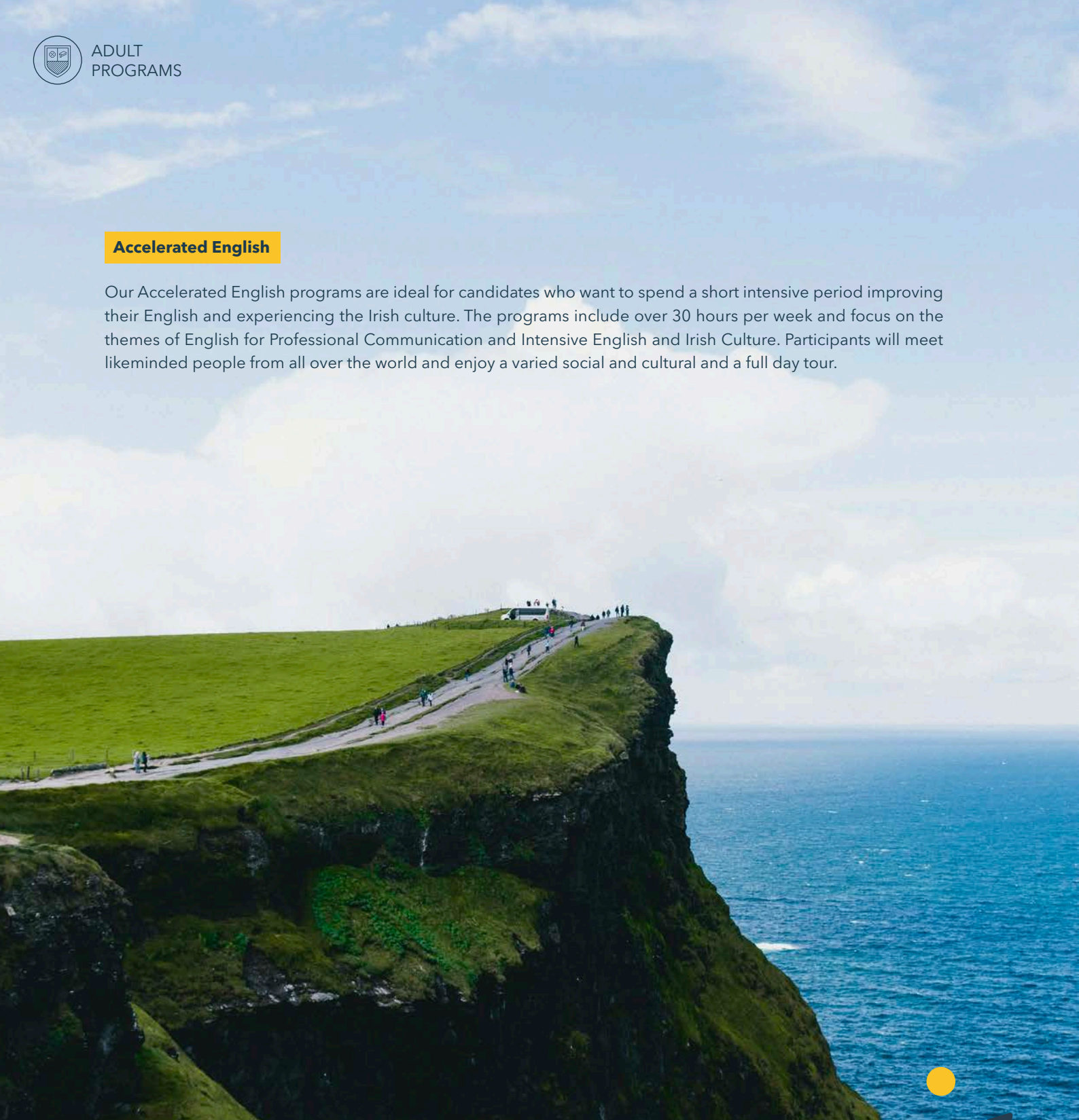
DROGHEDA





### Accelerated English

Our Accelerated English programs are ideal for candidates who want to spend a short intensive period improving their English and experiencing the Irish culture. The programs include over 30 hours per week and focus on the themes of English for Professional Communication and Intensive English and Irish Culture. Participants will meet likeminded people from all over the world and enjoy a varied social and cultural and a full day tour.





## WHY ELI SCHOOLS?

Ireland is famous for its hospitality and the Irish people are naturally warm and friendly. The country has a rich cultural heritage in music, art, poetry and dance, and the cities are buzzing with things to see and do. At ELI we seek to create an international community of learners from different countries, lifestyles, cultures, and traditions, all united by a common goal to transform their lives through English.







# ELI SCHOOLS

At ELI we hire friendly and enthusiastic people who love what they do, and we give them the tools and training to deliver the best experiences for our students. Our teachers are all university graduates with globally recognised teaching qualifications and significant teaching experience both in Ireland and overseas. Our support teams come from a variety of backgrounds, and most have travelled, so they know that it's the simple things that make the difference.



## Why choose ELI Schools?

### Academic

At induction on your first day, you will meet an Academic Manager who will support you throughout your program helping you to achieve the best that you can while you are with us.



### Reception

The first smiling face you'll see each day, the reception team will provide you with advice and support on all aspects of your stay and are your first point of contact if you need help.



### Student Experience

The student experience team deliver a varied and fun social and cultural program while also being available if you need medical or other professional welfare support.



### Accommodation

Whether it's advice on how to find a long-term bed privately, or to extend your stay in ELI accommodation, our team are on hand to ease the burden on sourcing a place to stay.





# STUDENT EXPERIENCE

There is so much more to life at ELI than the time spent in the classroom. We know our students want to maximise their experience with us while making new friends and using English all the time. We deliver a year-round program of activities and events to help create memories that will last a lifetime.

## Activity Program

We include a 6-hour educational Irish cultural experience for all participants of Accelerated English programs and an optional full day tour at the weekend. Guided by ELI you'll experience the best of Irish culture, and all entry fees are included.

- ✔ Walking Tour of Dublin
- ✔ Guided Museum Tour
- ✔ Irish Music Night
- ✔ Full Day Tour

### City Walking Tour

Explore Dublin or Drogheda with an ELI Guide and get to know the history and culture while planning what to see and do while in Ireland.

### Cultural Museum

Guided by an ELI Teacher, visit one of Dublin or Drogheda's best museums with entry fees included.

### Full Day Tour

Take an optional full day tour to Glendalough and Kilkenny or for those in Drogheda we visit Dublin for the day on a free full day tour.





# OUR SCHOOLS

## DUBLIN

As a young modern city Dublin is bustling with art, music, theatre & culture, and the city-centre is small and easy to get around. The nightlife is world famous, but equally attractive is the accessible outdoors with large parks and green spaces, and beautiful seaside towns are just 30 minutes from the centre. Dublin has something for everyone.



### ELI Dublin - Dame Street

Located on Dame Street, arguably the most prominent central street in Dublin, our school occupies a landmark and beautiful building overlooking Trinity College and Temple Bar. A modern large school with the best of Dublin on your doorstep.

- 22 Classrooms
- Landmark building with easy access to everything
- Overlooking Temple Bar and Trinity College
- Library, student café and student lounges
- Lively central Dublin close to tourism hotspots



### ELI Dublin - Grand Canal

Housed in a beautiful period building beside the canal, our classrooms have large windows and high ceilings, and the open spaces are brightly coloured with interesting artwork and funky furniture. Our café offers hot drinks and snacks with comfortable seating and an outdoor garden terrace for when the sun shines.

- 16 Classrooms
- Beautiful school beside the canal
- 15-minute walk to Trinity College and shopping
- Library, student lounges, café and garden
- Professional area close to Google and Facebook





# DROGHEDA

Located just 45 minutes from Dublin city centre, and 30 minutes from Dublin airport, Drogheda retains a lovely small-town atmosphere and has a history that dates back 5,000 years. Home to 70,000 people, Drogheda is packed with things to see & do and with plenty of high street shops and authentic Irish culture, it is the perfect destination for students of all ages.



## ELI Drogheda - Merchant House

Housed in a beautiful old stone warehouse building on the waterfront, our large school is located just 5 minutes' walk from the main shopping and cultural areas. Large student lounge with games area and a student café serving snacks and hot drinks.

- 18 Classrooms
- Beautiful school on the waterfront
- 5 minutes' walk to the town and shopping
- Library, large student lounge and café
- Historic city with small town atmosphere





# ACCOMMODATION

We are proud of our friendly host families and the welcome they provide. We also offer the option for single and shared room residences for students who want a more independent living experience.

## All Locations

### Host Families

Available all year

Staying with the right family is crucial to feeling happy and to creating those memories that will last a lifetime. All our families have been inspected by our team and have passed police checks. In Dublin students should expect to travel up to 45 minutes to school. In Drogheda many families are within walking distance or a 20-minute journey.



## ELI Dublin

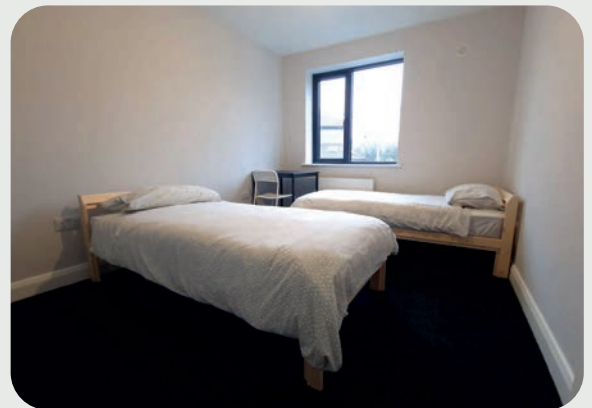
### Nepin House Residence

Adults 18+

Available all year

Housed in beautiful modern houses this small private ELI residence is located just 20 minutes by bus from ELI Schools and the city centre. The residence offers large shared comfortable rooms with beautiful bathrooms, large kitchen, and a private garden.

- 35 Shared Rooms (Shared Bathroom) bedrooms.
- Houses with Twin, Triple and Quad rooms
- Self-catering with shared kitchen and living area.
- Shared laundry, restaurant, and green areas.
- 25 minutes by direct bus to ELI and Dublin City





## ELI Dublin

### Point Campus Premium

Adults 18+

Available all year

Host Point Campus is a Premium Residence located in Dublin 1. The residence offers single rooms with private bathrooms as standard. Rooms are in apartments with 6-8 rooms with shared living and kitchen areas. The campus has excellent facilities including a gym and café.

- 150 Single rooms with a private bathroom
- Apartments of 6-8 bedrooms
- Self-catering with shared kitchen and living area.
- Shared laundry, restaurant, and gym
- 25 minutes by direct LUAS to ELI and Dublin City



## ELI Drogheda

### Millmount House

Adults 18+

Available all year

The Millmount Residence has nine bedrooms located in three adjoining houses with 24 beds in bunks beds. Eight students share a bathroom, living area and kitchen. The shared spaces are cleaned professionally once per week and all utility bills are included.

- 9 Shared Rooms (Shared Bathroom) bedrooms.
- Houses with Twin, Triple and Quad rooms
- Self-catering with shared kitchen and living area.
- Shared laundry
- 10-minute walk to ELI and Drogheda town centre





# OXFORD TEST OF ENGLISH

Endorsed by the University of Oxford and developed by Oxford University Press, the Oxford Test of English (OTE) is a globally recognised exam and certificate of English. We offer the OTE as an optional end of course of exam and it can be added to any of our Accelerated English programs.

## Approved Test Centre

ELI Schools is an approved Oxford Test of English test centre which means we deliver the exams in-house on campus at our schools in Dublin and Drogheda. Tests can be added to any Accelerated English Program (and others) and are delivered online on our test centre computers. Results are issued within 5 days for all levels from A1 - C1.

### Four Skills

The affordable and adaptive online tests cover Speaking, Listening, Reading, and Writing. Delivered online on approved test centre computers the tests take just two hours to complete. Invigilated and marked by real people, results are provided within five working days.

### Four Levels

The tests are aligned to the Common European Framework of Reference (CEFR). The Oxford Test of English tests CEFR levels A2–B2. The Oxford Test of English Advanced is for academic and professional purposes at B2–C1 levels of the CEFR.







# ERASMUS AND EUROPEAN FUNDING

Our Accelerated English programs are suitable for candidates who have approved Erasmus KA1 funding or for German professionals applying for Bildungsurlaub educational leave.

## Erasmus Funding for Education Professionals

Erasmus Key Action 1 (KA1) supports the mobility of individuals (pupils, teachers, invited experts, VET trainers, etc.) to take part in educational programs overseas. Our Accelerated English programs have been developed and designed for educational professionals who need to communicate more accurately and confidently through English. Candidates who are eligible for KA1 funding can apply to start any Monday for 50 weeks per year.

**Organisation ID:** E10275044

**PIC Number:** 875863053

### Bildungsurlaub for German Professionals

Bildungsurlaub educational leave is a unique form of leave that allows professionals in Germany to take part in professional education while not losing personal leave entitlements. Professionals in certain federal states can apply to their employers to take up to 5 days leave (one week) in any year, or to combine two years in one and take 10 days leave (two weeks). Our **Accelerated English** programs are ideal for professionals in all industries who need to communicate more accurately and confidently through English. The program offers up to 30 certified hours per week and candidates can combine both **English for Professional Communication** and **Intensive English and Irish Culture Program** to create a two-week package.





# ENGLISH FOR PROFESSIONAL COMMUNICATION

Our English for Professional Communication course is ideal for candidates who want to communicate more confidently and accurately in English in a variety of professional contexts.

## English for Professional Communication

English for Professional Communication is designed for learners with a B2 - C1 proficiency level and prepares professionals to confidently present, network, and communicate across different platforms with external stakeholders in international environments where English is the primary language. Our expert trainers use a collaborative teaching method to ensure a dynamic and effective learning experience.

### General English

#### Monday to Friday - 15 Hours

General English 15-hour focuses on the four main skills while developing each student's individual grammar and vocabulary.

### Professional Communication

#### Monday to Friday - 5 Hours

Professional English is designed to improve business communication skills for students with intermediate level and above.

### Conversation Club

#### One Session - 2 Hours

Conversation Club provides an opportunity to meet likeminded people who want to practice their English in an informal setting.

### Outcomes

This course will enable participants to communicate more accurately and confidently through English in professional context whether that is Education, Business or Personal.

### Course Material and Certificate

All course materials are included. We provide a core textbook, supplementary materials, and an End of Course Certificate and a Welcome Pack.

### Workshops and Networking

We include an optional Personal Branding Workshop every Friday to help participants improve their professional profiles along with lots of networking opportunities.

### Timetable

Our English for Professional Communication course includes 30 hours of educational and cultural classes and activities combined with a full day Irish Cultural Landmarks and Heritage Bus Tour.

	08:00 - 09:00	09:00 - 12:15	Social and Cultural Events
<b>Monday</b>	<b>English for Professional Communication</b> Levels B2 - C2	<b>General English</b> Levels B2 - C2	Induction & Walking Tour 14:00 - 17:00
<b>Tuesday</b>			Conversation Club 17:30 - 19:30
<b>Wednesday</b>			Irish Museum Tour 14:00 - 16:00
<b>Thursday</b>			Irish Music Night 20:00 - 22:00
<b>Friday</b>			Personal Branding 14:00 - 16:00
<b>Saturday</b>	Irish History and Cultural Landmarks Heritage Bus Tour		



# INTENSIVE ENGLISH AND IRISH CULTURE

Our Intensive English and Irish Culture Program course is ideal for candidates who want to communicate more confidently in English while experiencing the best of Irish culture.

## Intensive English and Irish Culture

Intensive English and Irish Culture Program is designed for learners of all levels of English who want to improve their overall English level, with a focus on speaking fluency and accuracy. Using a blend of communicative and task-based methods our experienced teachers use a core textbook to guide their lessons, while incorporating authentic content and materials featuring topics and themes from everyday life.

### General English

#### Monday to Friday - 15 Hours

General English 15-hour focuses on the four main skills while developing each student's individual grammar and vocabulary.

### Speaking Fluency

#### Monday to Friday - 5 Hours

Speaking Fluency is a level specific guided conversation class designed to improve communication skills for all contexts.

### Conversation Club

#### One Session - 2 Hours

Conversation Club provides an opportunity to meet likeminded people who want to practice their English in an informal setting.

### Outcomes

This course will enable participants to communicate more accurately and confidently through English in a variety of contexts while learning about Irish history and culture.

### Course Material and Certificate

All course materials are included. We provide a core textbook, supplementary materials, and an End of Course Certificate and a Welcome Pack.

### Irish History and Culture Club

A broad overview of Irish social and political journey from British rule, through independence, to the modern Irish Republic.

### Timetable

Our English for Professional Communication course includes 30 hours of educational and cultural classes and activities combined with a full day Irish Cultural Landmarks and Heritage Bus Tour.

	08:00 - 09:00	09:00 - 12:15	Social and Cultural Events
<b>Monday</b>	<b>Speaking Fluency</b> Levels A1 - C2	<b>General English</b> Levels A1 - C2	Induction & Walking Tour 14:00 - 17:00
<b>Tuesday</b>			Conversation Club 17:30 - 19:30
<b>Wednesday</b>			Irish Museum Tour 14:00 - 16:00
<b>Thursday</b>			Irish Music Night 20:00 - 22:00
<b>Friday</b>			Irish History and Culture 14:00 - 16:00
<b>Saturday</b>	Irish History and Cultural Landmarks Heritage Bus Tour		



# INTENSIVE ENGLISH AND OET EXAM PREPARATION

Our Intensive English and Oxford Test of English Exam Preparation course is ideal for candidates who want to prepare to achieve their best score in the globally recognised Oxford Test of English.

## Intensive English and Irish Culture

The Intensive English and Oxford Test of English Exam Preparation course is designed for learners of all levels of English (A1 - C1) who want to improve their overall English level, with a focus on taking the Oxford Test of English. Using a blend of communicative and task-based methods our experienced teachers use a core textbook to guide their lessons, while incorporating authentic content and materials featuring topics and themes from everyday life.

### General English

#### Monday to Friday - 15 Hours

General English 15-hour focuses on the four main skills while developing each student's individual grammar and vocabulary.

### Speaking Fluency

#### Monday to Friday - 5 Hours

Speaking Fluency is a level specific guided conversation class designed to improve communications skills for all contexts.

### Oxford Test of English Focus

#### One Session - 2 Hours

Exam Focus is a 2-hour exam preparation program with tips and techniques on how to prepare to take the Oxford English Test.

### Outcomes

This course is designed to help students to prepare for and to take the Oxford Test of English (OTE). The OTE is a globally recognised certified level of English.

### Course Material and Certificate

All course materials are included. We provide a core textbook, supplementary materials, and an End of Course Certificate and a Welcome Pack.

### Oxford English Exam

Candidates can choose to take the Oxford Test of English at the end of their program with a supplementary fee.

### Timetable

Our Intensive English and Oxford Test of English Exam Preparation course includes 30 hours of educational and cultural classes and activities combined with a full day Irish Cultural Landmarks and Heritage Bus Tour.

	08:00 - 09:00	09:00 - 12:15	Social and Cultural Events
<b>Monday</b>	<b>Speaking Fluency</b> Levels A1 - C2	<b>General English</b> Levels A1 - C2	Induction & Walking Tour 14:00 - 17:00
<b>Tuesday</b>			OET Exam Preparation 14:00 - 16:00
<b>Wednesday</b>			Irish Museum Tour 14:00 - 16:00
<b>Thursday</b>			Irish Music Night 20:00 - 22:00
<b>Friday</b>			Oxford Test of English 14:00 - 16:00
<b>Saturday</b>	Irish History and Cultural Landmarks Heritage Bus Tour		

## Intensive English and Irish Culture Program

Our **Accelerated English** programs are ideal for candidates who want to spend a short intensive period improving their English and experiencing the Irish culture. The programs include over 30 hours per week and focus on the themes of English for Professional Communication and Intensive English and Irish Culture. Candidates can take one program or combine both to make a two-week program that is sure to make an impact. All programs include an optional Irish History and Culture Bus Tour.

### What's included:

- ✓ General English 15 Hours
- ✓ Extended English 5 Hours
- ✓ Themed Workshops 4 hours
- ✓ Induction and Cultural Program 6 Hours
- ✓ Irish History and Culture Bus Tour
- ✓ **Optional:** Oxford English Test

	ELI Dublin		ELI Drogheda	
	Dame Street and Grand Canal		Merchant House	
Package Includes:	1 Week	2 Weeks	1 Week	2 Weeks
<b>Accelerated English Program:</b>	<b>€ 375</b>	<b>€ 700</b>	<b>€ 375</b>	<b>€ 700</b>
Application Fee:	€ 50	€ 50	€ 50	€ 50
Course Materials:	€ 35	€ 35	€ 35	€ 35
<b>Package Price:</b>	<b>€ 460</b>	<b>€ 785</b>	<b>€ 460</b>	<b>€ 785</b>

### Accommodation Options

		ELI Dublin		ELI Drogheda	
		1 Week	2 Weeks	1 Week	2 Weeks
<b>Host Family:</b>	<b>Single - Half Board</b>	€ 280	€ 560	€ 260	€ 500
<b>Host Family:</b>	<b>Shared - Half Board</b>	€ 230	€ 460	€ 220	€ 250
<b>ELI Residence:</b>	<b>Shared- Self Cater</b>	€ 230	€ 460	€ 220	€ 50
<b>Premium Residence:</b>	<b>Single - Self Cater</b>	€ 360	€ 720	N/A	N/A

### Admin Charges

	Applied to all bookings		Applied as per booking requirements	
<b>Accommodation Fee:</b>	Accommodation Booking Fee	€ 50	<b>Arrival Transfer:</b>	Arrival Per Person € 80
<b>Special Diet:</b>	All Special Diets - except vegetarian	€ 30/week	<b>Return Transfers:</b>	Arrival + Departure € 130





**ELI** ENGLISH LANGUAGE INSTITUTE

 [elischools.com](https://elischools.com)

 [@elischools](https://www.instagram.com/elischools)

 [@elischools](https://www.facebook.com/elischools)

 [@elischools](https://www.youtube.com/elischools)

